

WHERE 250 YEARS  
OF STORIES COME TOGETHER

BIG HORN  
COUNTY FAIR

POPCORN

BEST  
OF  
SHOW

TICKETS

JULY 27 - AUGUST 2, 2026



# FREE

*Community*

Breakfast

SATURDAY AUG 1ST

7AM-10AM

---

Community Breakfast Donors

7K RANCH

J & E IRRIGATION

FRONTIER TIRE

HALEY'S CONCESSIONS

BIG HORN FEDERAL

TFG A & W

TABLE MOUNTIAN INSURANCE

ALL DONATIONS GO TO BASIN FIRE DEPARTMENT

# Gretchen Gasvoda-Kelso

## 2026 OUTSTANDING EDUCATOR



With sincere appreciation and deep respect, we proudly dedicate this recognition to Gretchen Gasvoda-Kelso for her exceptional service, unwavering commitment, and lasting impact on the youth and families of Big Horn County through the 4-H program.

A truly outstanding educator does far more than teach projects or organize activities—they inspire confidence, encourage leadership, and help shape the future one young person at a time. Through countless hours of guidance, mentorship, and encouragement, Gretchen has exemplified the very best qualities of a 4-H educator: integrity, compassion, dedication, and a genuine belief in the potential of every child.

Whether working alongside members at fairs, livestock shows, or contests, leading educational programs, supporting volunteers, or simply offering a listening ear and words of encouragement, Gretchen has made an immeasurable difference in the lives of so many. Her influence reaches far beyond ribbons and awards. She has helped build character, strengthen families, and create opportunities that will continue to impact future generations.

The values of 4-H—Head, Heart, Hands, and Health—have been demonstrated daily through Gretchen’s work and example. Her leadership has not only strengthened the program but has also inspired countless young people to become confident leaders, responsible citizens, and compassionate individuals. For the dedication shown, the lives touched, and the legacy created, we extend our heartfelt gratitude and admiration. The success of our 4-H program is a reflection of the passion and commitment that Gretchen has shared so generously over the years.

Thank you for your outstanding service and for making a lasting difference in the lives of so many.



Lots of fun traveling, eating new places, and seeing the sights! We love teasing and spending time with her.

The Winterholler Family

We don't know how she does all the things she does. It's like she has unlimited energy! We don't know what we would do without her at the dog and horse shows. And she is at every show during fair. Always helping. A great teacher and example for our youth!

The Schwope Family

Gretty has made such a difference in so many kids lives! Our son was pretty quiet and not all sure he wanted to go on a 4-H photography trip to Yellowstone. After some convincing, he agreed to go on the trip. He apprehensively climbed into the suburban with Gretty and away they went. We still aren't sure what her secret was but when our son arrived home, he was laughing and talking a mile a minute. His dad and I joke that he hasn't stopped talking since! It's our favorite 4-H story, but there are countless others and they are all possible because we are lucky enough to have a passionate, dedicated educator in Gretty.

Tim & Robin Allen

Gretchen has a natural way of connecting with young people. She challenges them to do their best while genuinely caring about who they are becoming. As a parent, I have watched my daughter grow in confidence, responsibility, and leadership because of Gretchen's mentorship, and I know we are far from the only family who can say that.

Becky Perkins

There are very few people who give as selflessly and wholeheartedly to the youth in our community as Gretchen. Her dedication to 4-H goes far beyond meeting, projects, and events. She invests in the kids themselves. She has been an incredible mentor, role model, and source of encouragement not only for my children, but for me as a fellow 4-H leader and for every member of our club. Without hesitation, Gretchen is always willing to step in and help however she can. On a personal level, she has been just a phone call away during some of life's most hectic moments. No matter the situation, she shows up with a willingness to help, a calm presence, and a genuine heart for others. Those everyday acts of kindness and dependability are just another example of the incredible impact she has on the people around her.

Amy Hoyt

Gretty is kind, funny and dedicated to the youth in our county. When Sammy was deciding between showing in Park County or Big Horn County Gretchen was the deciding factor. We all wanted Sammy to have Gretty as her educator.

Boardman Family

I have always appreciated Gretchen and her family as neighbors and everything through 4-H with my kiddos and non kiddos (shooting sports). Gretchen is an amazing person, friend, and educator!

Sarah Holloway

During my youth, I was very fortunate to have Gretchen as a 4-H educator. She was a person that helped me build my confidence, leadership skills, and passion for agriculture. I never thought I would have a career as a 4-H agent, but I believe Gretchen helped pave a path for me to find this career that I love so much. I count my blessings to have Gretchen as a fellow 4-H agent and dear friend.

Morgan Haley

In my short time with Big Horn County 4-H, Gretchen was always a warm and welcoming constant. She always made sure I was learning and having fun while doing so. Gretchen loves her kiddos and gives her all to make sure you know you are special to her. My favorite memory of my time with Gretchen is driving from our office to a livestock judging competition with a car slapped full of kids and she was trying to keep them awake so she decided to turn the car into a karaoke party. Everyone was singing along and laughing. Thank you so much Gretty for being a light in your community and treating everyone like family. The effort and dedication you have put in for your community has left a lasting impression on many lives and I am so thankful our paths crossed.

Emily Arrington (Boone)

# **ENTRY DEADLINES**

**ALL FAIR ENTRIES JULY 6<sup>TH</sup> WITH A LATE FEES APPLIED UNTIL JULY 17<sup>TH</sup>  
(NO ENTRIES WILL BE ACCEPTED AFTER JULY 17<sup>TH</sup> )**

**GOAT ROPING ENTRIES OPEN ONE HOUR BEFORE ROPING JULY 28<sup>TH</sup>**

**BIG HORN COUNTY FAIR RODEO ENTRIES OPEN JULY 20TH  
RONNA COLLINGWOOD 307-765-4609**

**PIG WRESTLING ENTRIES OPEN JULY 6<sup>TH</sup>  
AND WILL REMAIN OPEN UNTIL DIVISIONS ARE FULL  
BUT ARE DUE NO LATER THAN JULY 27<sup>TH</sup>  
FORMS CAN BE FOUND AT [BIGHORNCOUNTYFAIR.COM](http://BIGHORNCOUNTYFAIR.COM)**

**DEMOLITION DERBY RULES AND ENTRIES CAN BE FOUND ONLINE AT  
[BIGHORNCOUNTYFAIR.COM](http://BIGHORNCOUNTYFAIR.COM)**

**COOKIE CONTEST ENTRYS DUE JULY 15<sup>TH</sup>  
TO ENTER EMAIL [KATTWITCHELL@ICLOUD.COM](mailto:KATTWITCHELL@ICLOUD.COM)**

# BHCF EVENTS SCHEDULE

FRI

JULY

17

FASHION AND FABRIC STYLE REVUE

9 AM

\*PARK COUNTY FAIR GROUNDS.  
CONSTRUCTION JUDGING/CROCHETING/QUILTING\*

MON

JULY

20

HORSE FUN DAY

9 AM

THUR

JULY

23

CAT SHOW

6 PM

FRI

JULY

24

DOG SHOW

9 AM

MON

JULY

27

HORSE SHOW DAY 1

8 AM

COWBOY POLO

6 PM

TUE

JULY

28

HORSE SHOW DAY 2

8 AM

PEEWEE EQUITATION

12 PM

RABBIT/ POULTRY WEIGH INS

1 PM

\*ALL POULTRY/RABBITS MUST CHECK IN PRIOR TO SHOW START TIME\*

RABBIT SHOW

2 PM

POULTRY SHOW

2 PM

GOAT ROPING

6 PM

WEN

JULY

29



LIVESTOCK WEIGH INS

7 AM

-SCALE 1 (CATTLE THEN PIGS)

-SCALE 2 (SHEEP THEN GOATS)

4-H STATIC JUDGING

11 AM

OPENING CEREMONIES

5 PM

SWINE SHOW

5 PM

\*BREEDING FOLLOWED BY MARKET

THUR

JULY

30



MARKET LAMB SHOW

8 AM

-FOLLOWED BY MARKET GOAT

FFA STATIC JUDGING

9 AM

PEEWEE SHEEP SHOWMANSHIP

4 PM

DRESS A PET

5 PM

PIG WRESTLING

7 PM

FRI

**JULY**

**31** ➔

**RING 1**

8 AM

**MARKET BEEF-BREEDING BEEF-DAIRY CATTLE**

**RING 2**

8 AM

**BREEDING SHEEP-BREEDING GOAT-DAIRY  
GOAT**

**ROUND ROBIN**

2 PM

**\*MANDATORY STATE FAIR MEETING AFTER  
ROUND ROBIN\***

**FASHION AND FABRIC FASHION SHOW**

4 PM

**BIG HORN CIRCUIT RODEO**

6 PM

**DANCE TO BUCK WYOLD**

9 PM

SAT

**AUG**

**1** ➔

**FREE COMMUNITY BREAKFAST**

7 AM

**PARADE**

10 AM

**BUYERS LUNCHEON**

12 PM

**JR LIVESTOCK SALE**

1 PM

**DEMOLITION DERBY**

6 PM

**GLOW STICK DANCE**

9 PM

SUN

**AUG**

**2** ➔

**COMMUNITY WORSHIP**

10 AM

**TOUGH TRUCK**

2 PM

# RED WHITE & RODEO

**BIG HORN COUNTY FAIR RODEO**

**FRIDAY, JULY 31ST**

**RODEO AT 7PM**

**SLACK AFTER PERFORMANCE**

**DANCE TO BUCK WYOLD FOLLOWING  
THE RODEO**



**BUCKLES DONATED BY RICHARD REALTY**



**ALL AROUND BUCKLE DONATED BY  
SAM & SUSIE GOOD IN MEMORY OF  
CASEY GOOD**

**DAVID HUBER PHOTOGRAPHY**

# FREE STAGE

2026

WED, JULY 29

## Raptor Experience

Experience Aviation in real time

11am

## Mad Lib Madness

Fast, Silly, and Guaranteed to make everyone laugh

1pm

## Leave No Trace

Wyoming State Parks

2pm

THU, JULY 30

## Reading with a Mermaid

Magical Storytime with a real Wyoming Mermaid

11am

## Mad Lib Madness

1pm

## Reading with a Mermaid

3pm

## Outdoor Recreation

Wyoming State Parks

4pm

## Dress a Pet

Show off your Pet/Livestock with the best costume, Open to all ages

5pm

FRI, JULY 31

## Lauren Bates Music

1pm

## 21<sup>st</sup> CCLC: Beyond the Bell Theater

Skit featuring a storyline of our founding fathers

2pm

## Kaycee Twichell Music

3pm

## Fashion and Fabric- Fashion Show

4pm

## Reading with a Mermaid

5pm

SAT, AUG 1

## Dauntless Sunrise Sweat

High Fitness Cardio workout. Approachable for all fitness levels.

Free to the public, any and all welcome

7am

## Pie Eating Contest

1pm

## Mad Lib Madness

2pm

## Cookie Contest Judging

4:30pm

## Cookie Finale

6pm

## Glow Stick Dance

8pm

# Table of Contents

## Open Class

Page	
26	Crafted Arts
27	Culinary
30	Floriculture
28	Food Preservation
34	Grain, Forage, & Crops
35	Beef Cattle
36	Breeding Meat Goats
35	Dairy Cattle
36	Dairy Goats
38	Halter Horse
38	Performance Horse
39	Poultry & Eggs
40	Rabbits
37	Sheep
37	Swine
33	Needlework
25	Pictures, Paintings & Drawings
	Quilt Blocks

## Education Exhibits

Page	
41	Classroom Art

## FFA

Page	
49	FFA Ag Mechanics
50	FFA Agronomy FFA
51	Classroom FFA
51	Showmanship FFA
52	Vegetables

## 4-H

Page	
55	4-H Aerospace
55	4-H Animal Poster Project
55	4-H Cake Decorating
63	4-H Cat
56	4-H Child Development
56	4-H Citizenship
63	4-H Cloverbuds
56	4-H Club Exhibits
56	4-H Computer
54	4-H Dog Agility
54	4-H Dog Conformation
53	4-H Dog Obedience
54	4-H Dog Rally
62	4-H Dog Showmanship
56	4-H Electricity
56	4-H Entomology
57	4-H Fabric and Textiles
57	4-H Fashion Revue Contest
57	4-H Food and Nutrition
57	4-H Food Preservation
58	4-H Gardening
58	4-H Geology
58	4-H GIS/GPS
58	4-H Health
58	4-H Horticulture
59	4-H Interior Design
59	4-H Judging Projects
59	4-H Leather Craft
59	4-H Nature and Ecology
59	4-H Photography
59	4-H Pocket Pet Project
60	4-H Range Management 4-H
60	4-H Recreation
60	4-H Robotics
60	4-H Rope Craft
60	4-H Self Determined
62	4-H Self Woodworking
61	4-H Shooting Sports
62	4-H Showmanship
61	4-H Sport Fishing
61	4-H Veterinary Science
61	4-H Visual Arts
61	4-H Web Pages
62	4-H Youth Leadership

## Junior Show

Page	
42	Jr. Dairy Cattle
42	Jr. Cattle
43	Jr. Dairy Goat
43	Jr. Meat Goat
44	Horse Fun Day
44	Jr. Horse Halter
44	Jr. Horse Performance
46	Jr. Poultry
45	Jr. Rabbit
47	Jr. Breeding Sheep
47	Jr. Market Sheep
48	Jr. Breeding Swine
48	Jr. Market Swine

## Additional Information

Page	
11	2025 JuniorLivestock Sale Buyers
12	2026 Fair Personnel
02	2026 Royalty
10	2026 Sponsors
03	Community Breakfast
07	Dedications
04	Entertainment Schedule
24	Grand Stand Schedule
14	Rules & Regulations
13	



**AW HUNT**  
CONSTRUCTION. INC.

## In Loving Memory of Jamie Dalin

Jamie Dalin passed away on November 8, 2025, surrounded by the love of her family. Though her time here was far too short, the legacy she leaves behind is one of strength, kindness, and unwavering love—an impact that will continue to echo through generations.

Jamie was born on October 29, 1977, in Walnut Creek, California, to Dean and Cathy Miars. From the very beginning, she lived with a bright spirit and an open heart. Her love for animals, reading, and learning shaped her childhood, and her passion for 4-H set her apart early—earning the honor of representing California at the national level in Washington, D.C. at just fourteen years old.

After moving to Wyoming with her family, Jamie met Rob while working at A&W. A meeting that would change both of their lives forever. Their marriage on May 8, 1999, became the foundation of a life built on deep love, laughter, adventure, and partnership in every sense of the word. Together they raised their two sons, William and Tyler, who were the center of Jamie's world and the greatest pride of her life.

Jamie found her happiest moments outdoors with her family and friends—camping in the mountains, snowmobiling, horseback riding, and making memories in the places she loved most. She had a gift for turning ordinary moments into lasting memories, and she taught those around her to slow down, look around, and truly live.

Jamie's lifelong dedication to 4-H remained one of her greatest passions. Having grown up in the program, she carried that legacy forward with pride, eventually serving on the Leaders Council and leading the Shell Rough Riders for many years. Whether she was mentoring youth, cheering from the stands, or serving breakfast burritos at the beef barn, Jamie showed up fully—giving her time, her energy, and her heart without hesitation.

She leaves behind her husband of 26 years, Rob Dalin; her beloved sons, Will and Tyler; her family; and countless friends whose lives are forever better because they knew her.

Jamie was a gift to everyone who knew her. She lived with positivity, gratitude, and a deep love for people. She taught us to cherish every day, to find joy in small moments, and to love our families fiercely.

We remember Jamie not only for the life she lived, but for the way she lived it. For her laughter she shared freely. For her steady hands that helped so many. For her unwavering love for her family and community. And for the light she carried everywhere she went. May we honor her by living as she did—choosing kindness, holding our loved ones close, working hard, laughing often, and never forgetting to find beauty in the small moments that make life meaningful.

Jamie's story does not end here. It lives on—in her sons, in her family, in every life she touched, and in every heart that was made brighter simply by knowing her.



# JOHN RALPH HALEY III

John Ralph Haley III, 77, a lifelong Big Horn Basin resident, passed away suddenly on Sunday, Oct. 19, 2025, at his home in Shell, Wyo.

John was born Dec. 5, 1947, in Basin, Wyo., to parents John and Geraldine (Langwell) Haley. He grew up in Greybull, where he graduated from Greybull High School in 1966. During his youth, he was active in 4-H, FFA, and the local fair, developing a strong work ethic and a love for agriculture that would carry throughout his life.

On July 12, 1965, John married his high school sweetheart, Kathleen Ann Neiman, in Driggs, Idaho. Together they built a beautiful life and raised four children in Greybull before moving to Shell about 45 years ago.

John dedicated much of his career to serving his community and working with his hands. He worked as fair manager for the Big Horn County Fair for about nine years and later as facilities overseer for the Wyoming State Fair for approximately three years. In addition, he spent time as a long-haul truck driver, providing faithfully for his family through hard work and determination.

He was an avid football fan, proudly cheering for his Denver Broncos, and loved the great outdoors—especially hunting and fishing. His sense of humor and passion for rural life shone through in everything he did. As his son Mike fondly recalled, “He got out of the sheep business — and then he got back into it.” John truly loved his “crazy sheep.” Among his prized possessions was his 1969 Oldsmobile, which he maintained with the same care and pride that he brought to every aspect of his life.



# Thank you to our 2026 Big Horn County Fair Sponsors

ANTLER MOTEL  
AW HUNT CONSTRUCTION  
BASIN PROCESSING  
BARICO CONSTRUCTION  
BIG HORN FEDERAL  
BIG HORN COUNTY FARM BUREAU  
BIG HORSE POINTS TIRE & AUTO  
CLUB DAUNTLESS  
FIRST BANK OF WYOMING  
FRONTIER TIRES  
GK CONSTRUCTION  
GOTTSCHKE REHAB  
HALEY'S CONCESSIONS  
HERMAN LIVESTOCK  
HELENA AGRI ENTERPRISES, LLC  
J & E IRRIGATION  
7K RANCK  
KELLY BROTHERS INSURANCE  
KIENLEN ACE HARDWARE  
KING'S CARPET ONE  
LYNN'S SUPERFOODS  
LITTLE ACRES FARMS  
MILLER'S FABRICATION

MINCHOW'S SERVICE  
MURDOCH OIL INC  
MOUNTAIN VIEW MALLARDS  
PRODUCTION MACHINE CO  
PRYOR MOUNTAIN ENGINEERING  
RIVER HILLS CUSTOM HARVESTING  
RUSSELL & RUSSELL CPA  
S & L INDUSTRIAL  
SECURITY 1<sup>ST</sup> TITLE OF WYOMING, LLC  
SIMPLOT GROWERS SOLUTIONS  
TCT  
TFW A & W  
TABLE MOUNTIAN INSURANCE  
TRACTOR GUYS  
TOOLMAN RENTALS & SALES  
TUMBLEWEED PROPANE  
VALLEY FLOWERS  
WISHBONE SIMMINTAL/  
JARED BOARDMAN FOR COUNTY COMMISIONER  
WYO-BEN  
WHITLOCK MOTORS  
WYOMING GAS



# 2025 Junior Livestock Sale Buyers

American Colloid-Plant	George Ward	Red Apple
Antler Motel	Gifford Ranch, LLC	Rising K Veterinary Services, LLC
Bank of Greybull	Greener Acres, LLC	S & L Industrial
Bar T Electric	Greybull Valley Ranch	S.E. Inc
Beta Seed/Peter Kukoski	Haley's Concessions/Mike and Tracy Haley	Schatz Ranch/Gene Schatz
Big Horn REA	Helena Ag Enterprises	Shooting Star Fencing/Ben and Amie Hatch
Billings Farmhand	J & E Irrigation	Simplot Growers
Billings Livestock Commission	Jolley Brother's Trucking	Split Rock Land and Cattle, LLC
Brenton Paxton Farms	King Enterprise	Stockmans Bank
Briess Malt and Ingredients Company	Legend Rock Ranch	Street Smart Highway Equipment Rental
C & B Operations	McGarvin Moberly Construction	Sunlight FCU
Cary and Mindi Lemonds	Miller's Fabrication	TFG A & W
Charles Sullivan	Minchow's Service, LLC	Toolman Rentals and Sales/Road 10 Ent
Chris Jermunson	Montana Limestone	Torgersons Equipment
Chuck Gams	Mountain Construction	Torrington Livestock
Curtis Farm	MTR Ranch Supply	Tumbleweed Propane
D & A Design	Murdoch Oil	Universal Industrial Supplies
Double D Livestock, LLC	Northern Livestock Video	Vera Gerrard
Elite West Realty	Pete Bradt Agency	VP Enterprises/Dan Vanderploeg
Engineering Associates	Pete's Plumbing	Western Ranch
Family Vision	Pine Coulee Bulls	Western Security Bank
First Bank of Wyoming	Slasky's Poor Boy Feed	Wilson Brothers Construction
First Interstate Bank	Powell Valley Healthcare	Wishbone Simmental/Jared and Wendy Boardman
First Northern Bank	Production Machine	Wyoming Lime Producers
Flitner Ranch/Greg and Pam Flitner	Pryor Mountain Engineering	
Fremont Motors Powell	Public Auction Yards	

## 2025 Add-on Buyers

A & C Motors	Deanna Annad	Big Horn Federal Rams Head Insurance
Agri Tire/Mike Whaley	Dewey Cattle Company	Randy and Sue Armstrong
American Colloid Field	Donna and Kurt Blain	Rising K Veterinary Services, LLC
American Colloid Plant	Dorvall Club Lambs	Riverton Livestock
Anonymous	Double D Livestock, LLC	Sam Twitchell
Bank of Lovell	Engineering Associates	Sarah and Eric Welling
Bazooka Lumber	Feels Like Home LLC/Dalin & Hannah Winters	Serena Lipp/Valley View Ranch
Big Hat Ranch/Naoma Tate	First Bank of Wyoming	Shane and Maria Kluesner Family
Big Horn Federal Savings Bank	George Ward	Snell Ranch
Box E Cattle Company	Helena Agri Enterprises	Speedy Tire/Justin Merrill
Buffalo Livestock Marketing	J & E Inc	Sunlight FCU
Busters Hay Grinding Services, LLC	James Sessions	The Barber Mafia
C & C Properties/Craig Walker	John Sweeny Family	Todd and Emily Dalin
Cammy and Lawrence Griffin	Juli Harrison	Tractor Guys
Carl Olson	Kay and Dave Neves	Up In Smoke BBQ/Chris & Todd Dalin
Charles Hancock	Kelso Farms/Mike & Gretchen Kelso	VP Enterprises/Dan Vanderploeg
Chelsea and Lance Martin	Levi Auctions	Western Sage Accounting
Cia Stull	Lovell Dental	Whitetail Properties
Copper Mountain Irrigation	Loyning Club Lambs	Wishbone Simmental/Jared & Wendy Boardman
Cowboss Rancher/Justin & Maci Lucht	Marv and Linda Tjoelker	Wyo-Ben
Crowfoot J Ranch	Minchow's Service, LLC	Wyoming 310
D4 Ag Services	Mike and Debbie Woodcock	
Dale and Jess Haley	Out West Adventures	
Dalin Family Boer Goats	Powell Valley Healthcare	
Dan Bush/ Mechanical Masters	Rafter JB Airbnb/John & Brenda Barkley	



# Fair Personnel

**4-H Educator** - Gretchen Gasvoda Kelso

**Fair Manager**- Dusty Miller

**Fair Board**

Rebecca Bates

Tracy Haley

Tim Allen

Dan Vanderploeg

Katrina Zeller

Jesse Dewey

Eron Lampman

**County Commissioners**

Deb Craft

Dave Neves

Bruce Jolley

**FFA Advisors**

Burlington FFA-Skyler Manthey

Greybull FFA-Michelle Arnette

Lovell FFA-Nick Edelman

Paintrock FFA-Aleah Russell

Rocky Mountain FFA-Braden West

**Superintendents**

Beef- Mark Hoyt

Cat- Christy Miller

Dog- Chelle Schwope

Elementary Education-Eron Lampman

Goat- Tammy Twitchell & Katrina Zeller

Horse Fun Day- Cannon McKim & Tucker McKim

Horse- Shannon Morgan

Poultry-Dani Martins

Rabbits- Christy Miller

Sheep-Preston Link

Static- Sandra Hendershot

Swine- Michelle Arnett

# Newspaper



Dusty Miller and Katrina Zeller at Chase Hawks 2010 (above) and Big Horn County 4-H achievement award night in 2018 (right).

**The only media that gives you scrapbook worthy moments and a way to travel back in time.**



Watch for pre, during and post fair coverage in your local newspaper.

## Big Horn County Newspapers



GREYBULL  
STANDARD



LOVELL  
Chronicle

BASIN  
Rustler

# **BIG HORN COUNTY FAIR**

## **GENERAL INFORMATION: FAIR POLICIES, RULES, REGULATIONS & EXHIBITOR GUIDELINES**

### **1. AUTHORITY AND ADMINISTRATION**

#### **Fair Management Authority**

The Big Horn County Fair Board and Fair Manager, collectively referred to as "Fair Management," shall have full authority over the administration, operation, and governance of the Big Horn County Fair ("Fair").

Fair Management reserves the right to:

- Adopt, revise, interpret, and enforce rules necessary for the safe and orderly operation of the Fair.
- Resolve disputes, emergencies, and matters not specifically addressed by these regulations.
- Regulate traffic flow, parking, and operation of vehicles or conveyances on Fairgrounds property.
- Deny admission to or remove any person, animal, vendor, exhibitor, or business whose conduct is disruptive, unsafe, offensive, or in violation of Fair rules.
- Determine the placement, size, appearance, and arrangement of signs, exhibits, displays, concessions, camping areas, and vendor spaces.
- Amend, modify, supplement, or clarify these rules whenever deemed necessary in the best interest of the Fair.

#### **Rule Interpretation**

Fair Management reserves the sole right to interpret, apply, and enforce all Fair rules and regulations. Decisions of Fair Management shall be final and binding.

#### **Order of Precedence**

When a conflict exists between General Rules and Department, Division, or Event-Specific Rules, the Event-Specific Rules shall govern.

### **2. LIABILITY, SAFETY, AND ASSUMPTION OF RISK**

#### **Assumption of Risk**

Participation in Fair activities is voluntary. All persons entering the Fairgrounds assume responsibility for their own conduct, safety, property, and participation.

#### **Limitation of Liability**

The Big Horn County Fair Board, Big Horn County, and their officers, employees, agents, volunteers, and representatives shall not be liable for any loss, theft, damage, injury, illness, accident, or death occurring on the Fairgrounds or arising from participation in Fair activities.

#### **Exhibitor Responsibility**

Exhibitors are solely responsible for the care, custody, control, and security of their animals, exhibits, equipment, vehicles, and personal property.

#### **Hold Harmless**

Participants, exhibitors, vendors, concessionaires, and contractors agree to indemnify and hold harmless the Big Horn County Fair Board and Big Horn County from claims arising from their participation or activities.

### **3. CONDUCT AND STANDARDS OF BEHAVIOR**

#### **General Conduct**

All exhibitors, participants, spectators, vendors, contractors, and guests shall conduct themselves in a respectful, safe, and sportsmanlike manner.

#### **Prohibited Conduct**

The following conduct is prohibited:

- Disorderly, disruptive, or unsafe behavior
- Harassment, intimidation, threats, or bullying
- Profane, abusive, or offensive language
- Fraud, extortion, price gouging, or misrepresentation
- Interference with judges, officials, or Fair operations
- Failure to comply with directives of Fair officials
- Damage to Fairgrounds property or the property of others

#### **Consequences**

Violations may result in:

- Verbal or written warning
- Removal from the Fairgrounds
- Disqualification of entries
- Forfeiture of premiums, awards, ribbons, and privileges
- Suspension or permanent exclusion from future participation
- Any other remedy deemed appropriate by Fair Management

#### 4. PUBLIC POLICIES

##### **Animal Policy–Pets**

Pets are prohibited on the Fairgrounds except:

- Service animals as defined by applicable law
- Animals entered in approved Fair competitions or demonstrations

Approved animals may enter no earlier than one hour before the scheduled event and must leave immediately following completion of the event.

Service animals assisting individuals with disabilities are permitted in accordance with applicable law. Emotional support, therapy, or companion animals are not considered service animals under this policy.

Owners of unauthorized pets will receive one warning. Continued violations may result in a \$100 fine and removal of the dog at the owner's expense.

##### **Alcohol Policy**

Alcoholic beverages are prohibited except within designated approved areas and authorized events.

##### **Smoking and Tobacco Policy**

Smoking, vaping, and the use of electronic smoking devices are permitted only in designated smoking areas. Designated smoking areas are restricted to the gravel parking lot in the northwest corner of the fairgrounds and the grassy area located south of the beer garden. The use of tobacco products, electronic cigarettes, vaporizers, and similar devices is prohibited in all other areas of the fairgrounds.

##### **Solicitation Policy**

Solicitation for charities, fundraising efforts, political campaigns, petitions, or outside organizations is prohibited unless approved in advance by Fair Management.

##### **Service Vehicles**

The use of service vehicles on the fairgrounds is restricted and subject to approval.

All ATVs, UTVs, golf carts, motorized scooters, and similar vehicles must:

- Be approved in writing by Fair Management prior to operation on the fairgrounds.
- Provide proof of current liability insurance.
- Be operated only by individuals of legal driving age who possess a valid driver's license.
- Comply with all applicable state and local laws.

Fair Management reserves the right to restrict, suspend, or revoke vehicles privileges at any time for safety concerns or violations of fair rules.

##### **Bicycles / Skateboards / RollerBlades:**

Bicycles, e-bikes, electric scooters, roller blades, skateboards, and other similar personal transportation devices are prohibited inside livestock barns, exhibit buildings, and on the midway at all times.

To ensure the safety of exhibitors, livestock, fair personnel, and fairgoers, any device operated in violation of this rule may be impounded by Fair Management. Impounded devices will be held in a secure location and may be reclaimed on Sunday beginning at 8:00 a.m., unless otherwise directed by Fair Management.

Exceptions may be granted for authorized service devices, mobility assistance devices, or vehicles specifically approved by Fair Management.

#### 5. ENTRIES AND ELIGIBILITY

##### **Entry Requirements**

All entries must be submitted according to official Fair procedures and established deadlines. Late entries may be accepted only if late fees are paid of **\$20.00 PER EXHIBITOR**. No entries will be accepted after the final published deadline. All entries must be made in the legal name of the owner at the time of entry.

**ENTRY DEADLINE: JULY 6, 2026**

**LATE FEE PERIOD: JULY 7, 2026 THROUGH JULY 17, 2026**

**NO ENTRIES WILL BE ACCEPTED AFTER JULY 17, 2026**

Exhibitors are encouraged to enter all items or animals they intend to exhibit. Entries not presented for judging may be marked as **NO SHOW** and removed from competition records.

### **Eligibility**

Eligibility shall be governed by:

- Membership requirements for youth organizations
- Compliance with Department and Division rules

### **Entry Corrections**

Incorrectly entered exhibits may be reassigned by the Superintendent if corrected before judging begins. Classes already judged will not be reopened. Corrections must be made at least one hour before judging.

### **Right of Rejection**

Fair Management reserves the right to reject any entry deemed inappropriate, non-compliant, unsafe, or inconsistent with Fair standards.

## **6. EXHIBITORS AND EXHIBITS**

### **Exhibitor Responsibilities**

All exhibitors shall cooperate with Fair officials regarding conduct, safety, scheduling, parking, facility operations, and compliance with Fair rules. Exhibitors are encouraged to bring a copy of their entries to verify if entries need corrected.

False representation, harassment, intimidation, abusive conduct, interference with judges or officials, or other unsportsmanlike behavior by an exhibitor or individuals associated with an exhibitor may result in disciplinary action.

Failure to comply may result in:

- Removal from the fairgrounds
- Disqualification from competition
- Forfeiture of premiums, ribbons, and awards
- Suspension of future participation privileges

Public disputes or disrespectful challenges to official judging decisions may result in forfeiture of awards and premiums. Exhibitors are responsible for humane care, control, and protection of animals in their possession.

### **Delivery and Inspection**

All exhibits must be delivered during designated intake periods and are subject to inspection and verification.

### **Release of Exhibits**

No exhibit may be removed before official release times without authorization from Fair Management or the Department Superintendent. Exhibits removed early or late without approval shall forfeit all premiums and awards.

- Open Class and static exhibits will be released **Saturday at 6:00 p.m.**
- 4-H and FFA livestock exhibits will be released **Sunday at 7:00 a.m.**
- All livestock must be removed by **Sunday at 10:00 a.m.**

### **Unclaimed Property**

Property not claimed by published deadlines may be considered abandoned and may be disposed of, donated, or otherwise handled at the discretion of Fair Management.

## **7. LIVESTOCK RULES AND ANIMAL WELFARE**

### **Duty of Care**

Exhibitors shall provide humane care, feeding, watering, handling, housing, and management of all animals.

### **Requirements**

All livestock must be in place by **5:00a.m.Wednesday, July 29, 2026**. Livestock may not leave prior to official release without approval. No animal may compete in both **Market** and **Breeding** classes. Breeds with no entries may be dropped from future fairs.

### **Animal Welfare Violations**

The following are prohibited:

- Animal abuse, neglect, or mistreatment
- Fraud or misrepresentation of ownership
- Administration of unauthorized substances
- Unethical fitting practices
- Misrepresentation of eligibility

- Drenching as a sole method to source nutrition unless approved by a licensed Wyoming veterinarian and provided to Fair Management
- Violations may result in disqualification, forfeiture of awards, and suspension from future participation.

### **Animal Health Requirements**

A valid health certificate is required for all livestock, including dogs and cats when applicable.

A licensed veterinarian may order removal or isolation of any animal showing signs of illness, injury, disease, or health concerns.

Sheep and goats must possess official scrapie identification.

### **Youth Livestock Responsibility**

All exhibitors including juniors must actively participate in the feeding, care, cleaning, and management of their project animals.

## **8. BARNs, STALLS, PENS, AND BEDDING**

Exhibitors are responsible for maintaining clean stalls, pens, cages, tack areas, aisles, and assigned spaces.

All assigned areas must be cleaned before departure and approved by the Superintendent prior to checkout.

Failure to clean assigned areas may result in loss of premiums, awards, and future participation privileges.

Hay, bedding, tack, and equipment shall not obstruct aisles, walkways, exits, or emergency access routes.

Only approved bedding (weed free straw is allowed) materials may be used.

Clean shavings and used bedding must be placed only in designated areas.

## **9. PARKING, VEHICLES, AND TRAFFIC**

Fair Management reserves authority over all vehicle operations on Fairgrounds property.

Fire lanes (including the lane east of livestock barns), emergency access routes, and service roads must remain clear at all times.

Unauthorized vehicles parked in restricted areas may be cited, towed, or removed at the owner's expense without notice.

Portable pens, temporary corrals, or livestock enclosures are prohibited in parking areas unless specifically authorized.

## **10. CONCESSIONS AND COMMERCIAL EXHIBITS**

Fair Management retains full authority over concessions, vendors, and commercial exhibits.

No person may sell, distribute, advertise, or solicit goods or services without prior written approval.

Concessionaires and vendors must comply with all applicable health, safety, insurance, licensing, and regulatory requirements.

## **11. CAMPING**

Camping is permitted only in designated Fair-approved areas.

All camping spaces will be assigned by the fair office.

Campers shall maintain their assigned space in a clean, orderly, and sanitary condition.

A responsible adult must be present in camping units occupied by minors.

Violations may result in eviction from Fairgrounds without refund.

One vehicle is allowed per campsite. Additional vehicles must use designated public parking areas.

## **12. SUPERINTENDENTS AND JUDGES**

### **Superintendents**

Department Superintendents shall:

- Assign exhibit and livestock space
- Verify eligibility and compliance
- Oversee judging and displays
- Supervise release of exhibits
- Enforce departmental rules
- Recommend future improvements
- Shall work collaboratively with the assigned Fair Board member to address and resolve any issues that may arise.
- Shall evaluate and make recommendations to Fair Management regarding any animal welfare concerns. Upon approval by Fair Management, an animal may be required to be removed from the fairgrounds, exhibits, or competition if deemed necessary to protect the health, safety, or welfare of the animal, exhibitors, or the public.

## Judges

Judges shall:

- Evaluate exhibits according to established standards
- Award placements only to worthy exhibits
- Withhold awards when standards are not met
- Report misconduct, interference, or disrespect by exhibitors

Lack of competition does not guarantee an award.

## Finality of Decisions

Judging decisions are final except in cases involving fraud, clerical error, eligibility violations, or rule violations.

## 13. PROTESTS AND GRIEVANCES

All protests must:

- Be submitted in writing. Only written protests will be considered.
- Identify the rule allegedly violated
- Be signed by the complainant
- Must be filed by **8:00 p.m.** on the day awards are made unless otherwise directed.
- Interested parties may be notified of hearings and permitted to present evidence.

Fair Management may investigate protests, misconduct, fraud, or rule violations. All protests regarding market animals will be determined by the Junior Livestock Sale Committee.

The Fair Management's determination shall be final and binding and will be determined at the first meeting of the Fair Board following fair.

## 14. PREMIUMS AND AWARDS

Premiums and awards shall be issued only to exhibitors who comply with all Fair rules. Violation of Fair rules may result in forfeiture of premiums, awards, ribbons, and recognition. Premium amounts shall not be altered by judges or superintendents.

4-H, FFA, and Junior premiums will be distributed through the Extension Office or FFA Advisors. Youth premiums may be withheld until required record books are submitted. Open Class premium payments will be mailed.

Payment disputes must be submitted by **November 1st of the current year**. Checks not cashed within **180 days** may become void and revert to Fair funds.

## 15. MEDIA AND PUBLICITY

By entering the Fairgrounds or participating in Fair activities, individuals grant permission for photographs, video recordings, livestreams, and other media captured during the Fair to be used by the Big Horn County Fair for promotional, educational, archival, or marketing purposes without compensation.

## 16. EMERGENCY AUTHORITY

Fair Management reserves the right to modify, postpone, suspend, cancel, or relocate any event, activity, exhibit, or competition when necessary to protect public safety, property, livestock, or the welfare of participants.

## 17. SEVERABILITY

If any provision of these rules is found invalid or unenforceable, all remaining provisions shall remain in full force and effect.



FARM BUREAU FINANCIAL SERVICES  
*Insurance • Investments*

247 No. 6th St.~Greybull • 176 E Main St.~Lovell  
765-4621 548-2065

Frank & Ellary Kelly, CLU, ChFC  
Agents  
*Good Luck at the Fair!*



LOVELL, WY 82431  
PH: (307) 548-6216

**WWW.BAIRCOCONSTRUCTION.COM**

# BIG HORN COUNTY FAIR

## JUNIOR LIVESTOCK SHOW & SALE RULES

### 1. General Information

- All 4-H and FFA entries must be pre-registered.
- Paper entries may be submitted directly to the Fair Office.
- Online entries may be submitted at [www.bighornfair.com](http://www.bighornfair.com).
- Exhibitors should print and bring entry receipts to verify entries are correct.
- Exhibitors are encouraged to enter all projects they intend to bring to the fair.
- Projects not exhibited will be marked as "No Show" and removed from judging lists.
- Showmanship Classes are separate from Market Classes. Refer to the 4-H and FFA department sections for details to make these entries.
- FFA members in good standing may show and sell one year following graduation.
- No 4-H or FFA member may remain overnight on the fairgrounds without approved adult chaperones.
- Any exhibitor found in possession of or under the influence of alcohol or illegal drugs will:
  - Be removed from the fairgrounds.
  - Forfeit all premiums, awards, and trips earned.
  - Be ineligible to participate in the following year's fair.
- Premium checks will be distributed through the Extension Office and FFA Advisors.
- Premiums will not be released until the exhibitor has submitted a completed record book.
- Premium payment discrepancies must be reported by November 1 of the current fair year. No corrections or replacement checks will be issued after that date.

### 2. General Animal Science Rules

- The judge's decision is final.
- In classes with limited competition, awards will be granted according to merit.
- All livestock exhibited in the Junior Livestock Show must be housed and maintained within the boundaries of Big Horn County throughout the ownership period.
- Market livestock will not be divided into breed-specific market classes.
- Miniature cattle breeds and Highland cattle are not eligible for the Junior Livestock Sale.
- Market animals must be shown in their respective market class to be eligible for the sale.
- Any procedure, treatment, injection, or application intended to alter an animal's natural appearance, conformation, or performance is prohibited. Veterinary procedures performed solely for the health and welfare of the animal are exempt. Violations may result in suspension from exhibiting at the Big Horn County Fair for up to two years, at the discretion of Fair Management and the Junior Livestock Sale Committee.
- Drenching as the sole source of providing nutrition is prohibited unless approved in writing by a licensed Wyoming veterinarian and submitted to Fair Management.
- To promote meat quality assurance and maintain show and sale eligibility, any market animal welfare issues shall be reviewed by:
  - The Species Superintendent
  - Two Fair Board Members
  - Two Junior Livestock Sale Committee Members
- A Wyoming licensed veterinarian may require any animal deemed unhealthy or unsafe to leave the fairgrounds. Such animals will be ineligible to show or sell.
- No drugs may be administered within thirty (30) days of the fair.
- Animals requiring treatment must observe all withdrawal periods and may be subject to holding requirements at the exhibitor's expense.
- If an animal is condemned due to drug violations, the seller must reimburse the buyer for all costs, including commissions.

### 3. Animal Fitting and Showing

- Exhibitors are expected to fit and prepare their own animals.
- Assistance may only be provided by a currently enrolled 4-H or FFA member.
- For safety purposes, adults may assist in moving livestock.
- The 4-H Educator or FFA Advisor will determine eligibility questions regarding fitting assistance.
- All sale animals must be shown and sold by their owner unless prior approval has been granted. Anyone unable to exhibit their own animal must obtain prior approval from the Junior Livestock Sale Committee. An approved substitute must be an eligible 4-H or FFA member.

### 4. Open Class Eligibility

- Youth exhibitors may enter livestock in Open Class departments subject to the following rules:

- There shall be no Open Youth Class unless a corresponding Open Class exists in the same breed and sex division.
- Only first and second place youth livestock exhibits are eligible to compete in Open Class competition.
- All youth livestock exhibits shall be judged prior to Open Class livestock exhibits.
- A youth horse entry may not be entered in the same Open Horse Class.

## 5. Weigh-In Procedures and Market Classes

### Market Class Determination

- Market classes will be established after weigh-in by a committee consisting of:
  - Species Superintendent
  - 4-H Educator
  - FFA Advisor
  - Junior Livestock Sale Committee Representative

### Weigh-In Requirements

- Youth must wear appropriate footwear at weigh-ins for all species of livestock.
- Closed-toe shoes are required. No open-toed shoes will be allowed.
- All sellers, excluding swine and goats, must provide proof of ownership and a brand inspection before animals can be weighed.
- Market lambs must be completely and uniformly slick shorn within ten (10) days of weigh-ins and have no more than one-quarter ( $\frac{1}{4}$ ) inch of wool.
- Market lambs will be checked at the scale to determine class and wool length.
- Market goats must be uniformly slick shorn with no more than three-eighths ( $\frac{3}{8}$ ) inch of hair upon arrival at the fairgrounds. Legs may have hair up to the hock and knee only.
- Animals will be weighed one time only on the designated scale.
- Zeroing of the scale will be at the discretion of the Junior Livestock Sale Committee.
- Animals must be clean and dry when presented for weigh-in.
- Market animals will sell by weight except for rabbits and poultry.

### Official Weigh-In Schedule

#### July 28

- Rabbits and Poultry – 1:00 PM

#### July 29

##### North Scale

- Sheep – 7:00 AM
- Goats – Immediately following completion of sheep weigh-ins

##### South Scale

- Beef – 7:00 AM
- Swine – Immediately following completion of beef weigh-ins

## 6. Market Livestock Weight Requirements

Species	Minimum Weight	Maximum Weight
Beef	1,150 lbs.	1,500 lbs. 160
Sheep	110 lbs.	lbs.
Swine	225 lbs.	320 lbs.
Goats	60 lbs.	No Maximum
Rabbit (Single – up to 80 days)	3.5 lbs.	5 lbs.
Rabbit (Pen of 3 – up to 80 days)	3.5 lbs.	5 lbs.
Poultry (Pen of 3)	3.5 lbs.	6 lbs.

- Animals below minimum weight will be shown as feeder animals and are not eligible for the sale.
- Beef, sheep, and goats exceeding the maximum weight may show and sell but will only be paid on the maximum sale weight.
- Swine weighing more than 320 pounds may show but are not eligible to sell.

## 7. Health Requirements

- A valid health certificate is required for all livestock entering the fairgrounds.
- All sheep and goats must possess a Scrapie ear tag to be allowed on the fairgrounds.
- Market sheep and goats must have milk teeth in place.
- Market beef must have been born after January 1 of the previous calendar year.

## 8. Ownership Deadlines

Species	Ownership Date
Market Beef	February 1 <sup>st</sup>
Market Swine	June 1 <sup>st</sup>
Market Sheep	June 1 <sup>st</sup>
Market Goats	June 1 <sup>st</sup>
Market Rabbits	June 1 <sup>st</sup>
Market Poultry	June 1 <sup>st</sup>

- All market animals must be tagged by the ownership deadline.
- Official sale tags issued by the Junior Livestock Sale Committee will serve as sale identification.
- All sale animal tag numbers will be verified prior to entering the sale ring.

## 9. Barn and Livestock Management

- No livestock may leave the barns after the fairgrounds close without approval from a 4-H Educator or FFA Advisor.
- Cattle tie-outs are permitted only between 7:00 PM and 8:00 AM.
- All cattle must be double-tied using appropriate halters and neck ropes.
- Cattle must be secured to prevent interference with neighboring animals.
- Bulls over two years of age must be shown with a nose lead.

## 10. Junior Livestock Sale Rules

- An exhibitor may sell only one animal in the Junior Livestock Sale.
- Grand and Reserve Champion exhibitors may elect not to sell their champion animal and instead sell another eligible market animal in regular sale order.
- No white ribbon animal will be allowed to sell.
- Sale animals must arrive in the sale ring at their assigned time. Late animals will be moved to the end of the sale order.
- If an exhibitor presents the incorrect animal at the sale ring, the exhibitor will be excused and allowed to sell at the end of the sale.
- Sale participation is limited to Big Horn County exhibitors. Exhibitors may not sell the same project through another youth livestock sale.
- All sale animals exhibited on the fairgrounds must be shown and sold by the owner unless prior approval has been granted.
- No decorating of sale animals is permitted.
- Youth exhibitors should represent their projects professionally during the sale.
- Quality Assurance training is required for all members selling livestock in the sale.
- Required sale attire includes:
  - Nice dress shirt or equivalent neat attire.
  - Clean pants or jeans without holes.
  - Closed-toe shoes.

## 11. Sale Commissions

- Cattle: 3%
- Sheep, Goats, Swine, Rabbits, and Poultry: 4%

## 12. Care and Delivery Responsibilities

- Sellers remain responsible for feeding and caring for sale animals until delivery to the buyer, slaughter facility, or resale truck through October 1. After October 1, the seller and buyer will negotiate feed costs.

- Animals attending State Fair must be fed and cared for by the exhibitor for a minimum of ten (10) days after returning before delivery.
- Proof of delivery is required before payment will be issued.

### 13. Sale Proceeds

- Sale proceeds will be distributed through the Extension Office and FFA Advisors, typically around October 1.

### 14. Record Book Requirements

- No exhibitor may participate in the Junior Livestock Sale without completing the previous year's record book requirements.
- This requirement does not apply to first-year market exhibitors.
- The 4-H record book deadline is the second Friday in September.
- The Extension Office and FFA Advisors shall provide a list of non-compliant exhibitors to the Sale Committee within one week of the deadline.

### 15. Bred-to-Fed Contest

- Animals must be owned, raised, and fed entirely within Big Horn County by the exhibitor from start to finish.
- Eligible animal information will be collected at tagging, and a list of eligible participants will be provided to the Fair Office.
- Eligible species include beef, sheep, swine, and goats.
- Animals must be exhibited in their respective Market Class.
- Animals must meet all minimum market weight requirements.
- There is no entry limit.
- Grand Champion awards will be presented in each eligible species.

### 16. Herdsmanship Competition

Participation is mandatory for all 4-H and FFA livestock exhibitors.

#### Herdsmanship Scorecard

Category	Points
Cleanliness of Stalls, Pens & Alleys	50
Arrangement of Exhibit	15
Appearance of Animals	15
Stall Cards and Educational Displays	10
Overall: Conduct, Cooperation, Public Relations & County Scope	10
<b>Total Possible Points</b>	<b>100</b>

#### General Rules

- Barn Superintendents will select Herdsmanship winners.
- Superintendents reserve the right not to award a Herdsmanship winner.
- Awards received in exhibit classes will not be considered in Herdsmanship scoring.
- Failure to maintain clean facilities may result in forfeiture of premiums and awards.
- Adults fitting animals will disqualify exhibitors from Herdsmanship consideration.
- Minimum direction by a parent or leader is permitted for junior-aged members.
- For safety reasons, adults may assist in moving livestock.

### 17. Round Robin Showmanship

#### Eligible Species

- Beef
- Sheep
- Swine
- Goat
- Horse

#### Eligibility

- Grand Champion Showmanship winners from each species are eligible.

- If a showman is Grand Champion in more than one species, the exhibitor must notify the clerk which species they will represent.
- The opportunity will pass to the next eligible showmanship winner until each species is represented.
- Each species will consist of a 4-H Junior, 4-H Intermediate, 4-H Senior, and FFA representative.

**Contest Rules**

- General showmanship rules for each species shall apply.
- Contestants must use the same animal exhibited in their original showmanship competition.
- Contestants must permit other Round Robin participants to show their animals.
- Fifteen (15) minutes will be allowed for the contestant's own species.
- Three (3) minutes will be allowed between classes.
- Ten (10) minutes will be allowed for each additional species.

**Tie-Breaking Procedure**

- Tie-breakers will be determined using fitting and showing scores.
- If additional tie-breaking is necessary, one contestant will draw a class from a hat.
- Both contestants will show that class to be judged by all five judges.

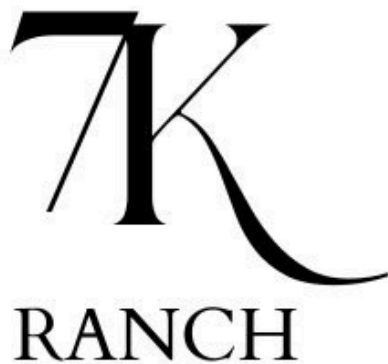
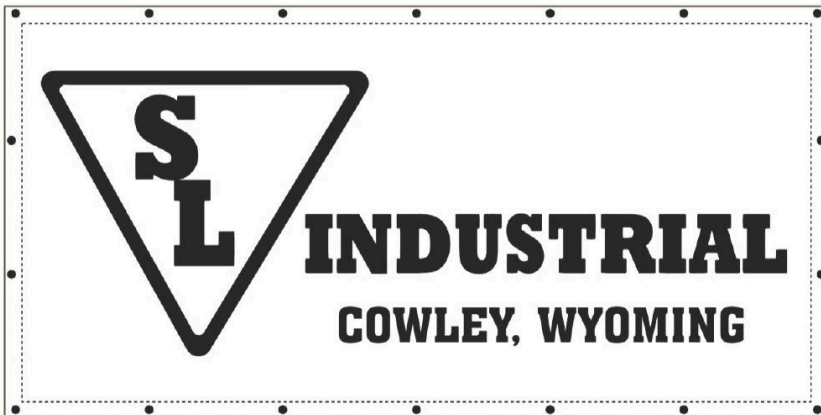
**Round Robin Scorecard**

**Category 1– Your Animal**

- Fitting: 20 points
- Personal Appearance: 10 points
- Showmanship: 20 points

**Categories 2–5 – Other Species**

- Personal Appearance: 10 points
- Showmanship: 30 points
- Respect and Sportsmanship: 10 points



## Department 1 Open Class Pictures, Paintings & Drawings

### General Information

- Exhibitors from a nursing home or retirement center need to enter a "S" preceding your name. Exhibitors who are handicap need to enter a "H" preceding your name & provide a written statement describing the handicap.
- Eligible articles for this division must be original work done by the exhibitor and completed within the last 5 years. Copy work or imitation NOT accepted. Articles that have been exhibited in prior years will not be accepted. The exhibitor must be a resident of Big Horn County. Students may enter in open class.
- No exhibits shall be entered for more than 1 premium, except that is part of a collection. Where there is no competition, the judge may award according to merits of the exhibit.
- Best of Show ribbons may be awarded at judges discretion, to one outstanding exhibit in each of the following:
  - a. Art ~ Professional & Amateur
  - b. Photography ~ Professional & Amateur
- All artwork must be framed or matted, and hung with wire. Absolutely NO "Self-Leveling" saw tooth hangers or string accepted. No glass is permitted.
- Pictures cannot be smaller than 5x7 or larger than 16x20. They must be mounted or framed separately. Any picture 12x16 or larger must be wired incase hanging is necessary. No substitution or further subdivision allowed other than what is shown in the book
- Miniature Photos: This division is for children 14 and under. Picture must be mounted on stiff mounting board or matted behind a board. Picture cannot exceed 5x7.
  - a. Professional** ~ one who derives income from an art or craft.
  - b. Amateur** ~ One who does not derive income from art or craft. Has less than 5 years of art classes

### Monochrome Photography—Division101-102

Division 101 - Professional  
Division 102- Amateur

Class Name	Class Number
Animals	1
Historical	2
People	3

Plants	4
Landscape	5
Still Life	6

### Color Photography - Division103-104

Division 103 - Professional  
Division 104 - Amateur

Class Name:	Class Number:
Animals	1
Historical	2
People	3
Plants	4
Landscape	5
Still Life	6

### Miniature Photos (14 yrs. & younger) Division105

Class Name:	Class Number
Agriculture	1
Animals	2
Historic	3
People	4
Plants	5
Picture Series (one mount)	6
Scenic Landscape	7
Still Life	8

### Painting— Division 106-107

Division 106 – Professional  
Division 107 - Amateur

Class Name:	Class Number
Oil Paint.	1
Acrylic Paint.	2
Water Color	3
Pastel Paint	4

### Freehand Drawing - Division108-109

Division 108 - Professional

Division 109 - Amateur

Class Name:	Class Number:
Best Specimen	1

### Youth Art (14-18 yrs old) Division110

Class Name	Class Number:
Painting, any media	1
Drawing	2
Collage	3
Miscellaneous	4

# Department 2 Open Class Crafted Arts

### General Information

- Exhibitors from a nursing home or retirement center need to enter a “S” preceding your name. Exhibitors who are handicapped need to enter a “H” preceding your name & provide a written statement describing the handicapped.
- Eligible articles for this division must be original work done by the exhibitor and done within the last 5 years. Copy work or imitation NOT accepted. Articles that have been exhibited in prior years will not be accepted. The exhibitor must be a resident of Big Horn County. Students may enter open class.
- No exhibits shall be entered for more than 1 premium, except that is a part of a collection. Where there is no competition, the judge may award according to merits.
- All exhibits will be judged on the workmanship of the entire piece. Clean up, glaze, application, eye appeal, & originality.
- Best of Show ribbons may be awarded at judges discretion to one outstanding exhibit in each of the following:
  - a. Crafts/Leather
  - b. Ceramics
  - c. Professional ~One who derives income from an art or craft.
  - d. Amateur ~ One who does not derive income from an art or craft. Has less than 5 years of art classes.

### Original Sculpture—Division 201

Class Name	Class Number
Wood	1
Metal	2
Stone	3
Clay or Ceramic	4
Any other material	5

### Models (cars, planes, tractors, etc.) Division 202

Class Name	Class Number
Best Specimen, Kit	1
Best Collection, Kit	2
Best Specimen, Creative	3
Best Specimen, Original	4

### Hobby Ceramics—Division 203

Class Name	Class Number
Under Glaze	1
Unusual Glaze	2
Controlled Glazing	3
Any other not mentioned	4

### Crafts—Division 204

Class Name:	Class Number:
Basket Weaving	1
Car Freshies	2
Collection	3
Decorative Painting	4
Found Art	5
Glass Painting or etching	6
Jewelry	7
Mosaic & Collage	8
Metal Work	9
Recycled Art	10
Rugs	11
String Design	12
Woodcraft	13
Any other Art/Craft	14

### Woodwork—Division 205

Class Name:	Class Number:
Recreation	1
Furniture	2

### Bath and Beauty—Division 206

Class Name	Class Number
Soap	1
Bath Bombs	2
Moisturizer	3
Make Up	4
Perfume	5
Any Other	6

### Bean Art— Division 207

Class Name:	Class Number:
Bean Picture 8 & Under	1
Bean Picture ages 8-15	2
Bean Picture, Adult	3

# Department 3 Open Class Culinary

**General Information:**

- Exhibits must be the product of the “Home Kitchen”
- 4-H Club members enrolled in 4-H Foods projects are not eligible to compete in the children’s section but may compete in open class adult classes.
- Mini Size pans may be used for breads and cakes.
- There is NO refrigeration so we ask there be NO cakes or pies that spoil.

**Bread—Division 301**

Class Name:	Class Number
Yeast Bread	1
Yeast Rolls	2
Cinnamon Rolls	3
Coffee Cake	4
Corn Bread	5
Muffins	6
Nut Bread	7
Squash Bread	8
Any other “quick” bread	9
Any other Bread	10

**Cakes - Division 302**

Class Name:	Class Number:
White Cake	1
Yellow Cake	2
Chocolate Cake	3
Cup Cakes	4
Any other Cake	5
Doughnuts	6
Family Recipe	7
Decorated Cakes	8

**Cookies—Division 303**

Class Name:	Class Number:
Chocolate Chip	1
Macaroons Cookie	2
Oatmeal Cookies	3
Peanut Butter Cookie Any	4
Other Drop Cookie	5
Chilled Rolled Cookie	6
Filled Rolled Cookie	7
Decorated Cookie	8
SugarRolled Cookie	9
AnyOther Rolled Cookie	10
Chocolate Based Cookie	11
Coconut Bars	12
Fruit Display	13
Display, 3 kinds, 2 each	14
Any Other Bars	15

**Pies—Division 304**

ClassName:	Class Number:
Apple	1
Pumpkin	2
OriginalRecipe	3
AnyOther	4

**Candy—Division 305 (4 pieces needed)**

Class Name:	Class Number
Caramels	1
PeanutBrittle	2
Fudge	3
Display, 3kinds, 2each	4
Any Other	5

**Unique—Division 306**

Class Name:	Class Number:
Diabetic	1
Foreign Foods	2
Festival Foods	3
Gluten Free	4

Wishbone



Simmental

## Department 4 Open Class Food Preservation

### **General Information:**

- Exhibitors are allowed two entries per class.
- A statement of canning method used and processing time must be submitted; NOTE-Class numbers are the same for honey preserved foods and diabetic preserved foods. Please put a “H” or “D” preceding YOUR name. This will enable superintendent to place them in the right class
- All jars must be sealed except for dried foods. New rings & lids must be used on all jars. Jams, preserves & marmalades must be in regulation ½ pint sealed glass jars. Pickles, relishes, and sauces must be in regulation, standard size glass jars.
- All jars must be clean. Dirty jars will be disqualified.
- All lids will be scratched after judging. Exhibits with scratched lids will be disqualified. Judges may open jars if placings are close. Entries of vegetables, fruits, and meats must be preserved by approved methods. For canning guidelines & approved methods, contact the Extension office in Basin. A statement of canning method used & processing time must be submitted. Jars cannot be taken for other entries. Attach entry tickets to jar lids. DEFINITIONS: Preserves are fruit in which the tissue of the fruit has been absorbed until its filled with syrup instead of water, Marmalades are usually made from fruits that have some jelly-making qualities, though sliced oranges & lemon may be added. Conserves differ from marmalades in that several fruits may be combined, nuts are allowed.

### **VEGETABLE & FRUIT SCORECARD:**

1. Uniform Size, Shape & Ripeness
2. Color
3. Condition of Solids (firm & tender)
4. Condition of Liquid
5. Pack (solid, economical & attractive)

### **Canned Vegetables—Division 400**

Class Name:	Class Number
Asparagus	1
Beans, Green	2
Beans, Any Other	3
Beets	4
Carrots	5
Corn, Creamed	6
Corn, Whole	7

### **Division 400 continued....**

Class Name:	Class Number:
Peas	9
Peppers, Hot	10
Peppers, Sweet	11
Pumpkin	12
Rhubarb	13
Squash	14
Tomatoes	15
Mixed Vegetables	16
Mushrooms	17
Display, 2 Uniform Jars	18
Any Other Varieties	19

### **Canned Fruit—Division 401**

Class Name:	Class Number:
Apples	1
Apricots	2
Cherries	3
Fruit Cocktail	4
Peaches	5
Grapes	6
Fruit Mincemeat	7
Pears	8
Plums	9
Raspberries	10
Strawberries	11
Nuts	12
Apple Sauce	13
Apple Pie Filling	14
Display, 3 jars, 3 varieties	15
Any Other	16

### **Canned Juices—Division 402**

Class Name:	Class Number:
Apple Juice	1
Choke Cherry	2
Grape	3
Plum	4
Tomato Juice	5
Mixed Vegetable	6
Display, 3 jars, 3 varieties	7
Any Other, List Type	8

## Department 4 Open Class Food Preservation Continued

### Canned Meat—Division 403

Class Name:	Class Number:
Beef	1
Chicken	2
Chili, with meat	3
Fish	4
Pork	5
Turkey	6
Wild Game	7
Stew	8
Soup Stock	9
Any Other	10

### Jelly, Preserves, Conserves, ETC—Division 404

Class Name:	Class Number:
<u>Jelly &amp; Syrup Class</u>	*
Apple, All Types	1
Berry, All Types	2
Grape	3
Plum	4
Any Other, List Variety	5
Syrup, Label as to kind	6

### Conserve, Marmalade, Butter & Jam Class

Apricot Preserves	7
Cherry Preserves	8
Any Other Preserves	9
Orange Marmalade	10
Any Other Marmalade	11
Apple Butter	12
Any Other Butter	13
Apricot Jam	14
Berry Jam, All Types	15
Any Other Jam, Fruit	16

### Pickles & Relishes—Division 405

Class Name:	Class Number:
Bean, All Types	1
Beet	2
Carrot	3
Cucumber	4
Green Tomato	5
Mixed	6
Pepper, Hot	7
Pepper, Sweet	8
Zucchini	9
Any Other	10
<u>Relish Class</u>	*

### Relish Class

Corn	11
Ripe Tomato	12
Sauerkraut	13
Any Other	14
<u>Sauce Class</u>	*
Chili	15
Salsa	16
Tomato	17
Spaghetti	18
Any Other	19

### Dried Herbs & Spices—Division 406

Class Name:	Class Number:
Basil	1
Chamomile	2
Chives	3
Dill	4
Lavender	5
Lemon Balm	6
Mint	7
Oregano	8
Rosemary	9
Sage	10
Thyme	11
Any Other, List Variety	12

**We Proudly Support  
the Big Horn County Fair**



## Department 5 Open Class Floriculture

### General Information:

Exhibitors are allowed 2 entries each class. If a flower is to remain fresh throughout the exhibit period, it should be cut no later than the day before it is shown. It is generally recognized that cutting in the afternoon will help ensure a winning entry.

Some flowers, such as dahlias & poppies, need to have their stems seared over an open flame immediately after cutting. To encourage the uptake of water in woody-stemmed perennials, such as hollyhocks cut ends of the stem or should be lightly crushed. Always select flowers that are coming into full bloom-not already mature. Flower stems should be cut cleanly at an angle with sharp knife or pruning shears then put into room temperature water. Following cutting & water treatment, specimens should be placed in a cool, darkened room. Leave the flower undisturbed overnight. Flowers predated in this way improve their substance & will hold their freshness longer.

Definitions for cut flowers: **BLOOM:** One individual flower, generally on a single stalk. **SPRAY:** A single branch or shoot bearing flowers, buds & foliage. **SPIKE:** Several flowers on a long stem. **STEM:** The main ascending part of a plant.

<b>RIBBON POINT VALUES:</b>	<b>SPECIAL ROSETTES:</b>
Blue- 5 points	Outstanding Flower Arrangement
Red - 3 points	Outstanding Potted Plant
White - 1 point	Premier Exhibitor

### Cut Flowers—Division 500 Continued...

Zinnia	30
Any Other Type	31

### Fresh Herbs & Spices—Division 501

Class Name:	Class Number:
Chives, Garlic	1
Chives, Onion	2
Dill	3
Lavender	4
Lemon Balm	5
Mint	6
Oregano	7
Rosemary	8
Sage	9
Sweet Basil	10
Thyme	11
Any Other, List Variety	12

### Vegetables— Division 502

Class Name:	Class Number:
Beans, Snap	1
Beans, any other	2
Beets	3
Broccoli Head	4
Brussel Sprouts	5
Cabbage	6
Carrots	7
Cauliflower Head	8
Celery	9
Corn, Sweet	10
Cucumber	11
Egg Plant	12
Endive, Plants	13
Gherkin	14
Kale	15
Kohlrabi, Specimens	16
Lettuce, Head	17
Muskmelons	18
Okra	19
Onions	20
Onions, green	21
Parsnips, Table	22
Peas, Sugar Snap	23
Peppers, Hot	24
Peppers, Sweet	25
Radish	26
Rhubarb, green & red	27
Squash, Summer	28
Squash, Zucchini	29
Tomato, Large	30
Tomato, Small	31
Turnips	32
Watermelon, ripe	33
Display, 3 or more vegetables	34
Any Other, List Variety	35

### Cut Flowers—Division 500

Class Name:	Class Number:
Achillea (Yarrow)	1
Alyssum	2
Bachelors Button	3
Carnation	4
Chrysanthemum	5
Clematis	6
Columbine	7
Cone Flower	8
Coreopsis	9
Cosmos	10
Daisy	11
Dianthus	12
Gaillardia	13
Hollyhocks	14
Lily	15
Marigold	16
Nasturtiums	17
Pansy	18
Petunia	19
Phlox	20
Poppy	21
Rose	22
Salpiglossis	23
Salvia	24
Snapdragon	25
Snow-on-the-mountain	26
Sunflower	27
Sweet Pea	28
Verbena	29

## Department 5 Floriculture Continued

### Potted Plants- Division 503

Class Name:

Class Number:

Cactus, any type	1
Cactus Garden, any 2 or more varieties grown in 1 container	2
Geranium	3
Hoya	4
Philodendron	5
Succulent	6
Flowering Plant (write name on tag)	7
Vining Plant (write name on tag)	8
Foliage Plant (write name on tag)	9
Planter or Dish Garden	10
3 or more types of plants	11
Terrarium, 3 or more types of plants Terrariums shall not contain any plastic foliage or flowers.	12
Any Other	12



*People... Products... Knowledge®*





# WYOMING GAS COMPANY

## Wyoming's Natural Choice

Basin | Burlington | Byron | Greybull | Manderson | Thermopolis | Worland

---

Wyoming Gas Company, the first natural gas utility in Wyoming, has been serving the Big Horn Basin for a better tomorrow. In Business since 1909, Wyoming Gas Company is a locally owned and operated natural gas utility. The proud history of Wyoming Gas Company still continues today.

The desire to provide good quality service and enhance the quality of life to the people we serve is important. Wyoming Gas Company is proud to be part of the Big Horn Basin.

## CALL 811 BEFORE YOU DIG

**Department 6 Open Class Needlework**

**General Information**

Exhibitors from the nursing home or retirement center need to enter a "S" preceding your name. Youth exhibitors under 12 need to put a "Y" preceding your name. Articles exhibited in this department must be handwork of exhibitor & have made it within last 3 years. Articles must be clean & neat in appearance. Article not completed will be disqualified. If no competition or articles have been incorrectly entered, judges may award premiums according to merit.

**CRITERIA FOR JUDGING MACHINE & HAND SEWING:**

1. Material used, including trimming
2. Workmanship
3. General Appearance

**CRITERIA FOR JUDGING NEEDLEWORK:**

1. Workmanship
2. Design & Color
3. Suitability of Material
4. General Appearance

**Crochet-Division 600**

Class Name:	Class Number:
Clothing, Accessories	1
Clothing, Garments	2
Home Décor	3
Kitchen/Dining Accessories	4
Novelties	5
Toys	6
Wall Hanging	7
Any Other	8

**Cross Stitch—Division 601**

Class Name:	Class Number:
Bookmark	1
Bread Cloth	2
Garment, Any	3
Holiday Object/Design	4
Perforated Paper	5
Picture, any count aida	6
Pillow	7
Towel, any	8
Wall Hanging	9
Any other	10

**Embroidery Hand/Machine—Division 602**

Class Name:	Class Number:
Applique, any article	1
Garment	2
Pillow	3
Pillowcases, pair	4
Picture	5

**Embroidery Hand/Machine—Division 602 continued**

Stamped, any article	6
Silk Ribbon, any article	7
Tablecloth	8
Towels	9
Any Other	10

**Knitting—Division 603**

Class Name:	Class Number:
Clothing, Accessories	1
Clothing, Garments	2
Home Décor	3
Kitchen/Dining Accessories	4
Novelties	5
Toys	6
Wall Hanging	7
Any Other	8

**Machine Sewing—Division 604**

Class Name:	Class Number:
Accessories	1
Bag	2
Coat	3
Costume	4
Dress	5
Jacket	6
Pants/Slacks	7
Recycled, any article	8
Shirt	9
Skirt	10
Sleepwear	11
Swimwear	12
Shorts	13
Vests	14
Any other	15

**Needlework—Division 605**

Class Name:	Class Number:
Bargello	1
Petit Point	2
Cutwork	3
Picture, Long Stitch	4
Picture, Needle Point	5
Tatting, any	6
Punched Needle, any	7
Pillow, Long Stitch	8
Pillow, Needle Point	9
WallHanging, Long Stitch	10
Wall Hanging, Needle Point	11

**Department 6 Continued**

**Needlework—Division 605 Continued**

Class Name:	Class Number:
Needle Felting, any	12
Rug Making, any	13
Fiber Manipulation, any	14
Any Other	15

**Youth Needlework—Division 606**

Class Name:	Class Number:
Crochet	1
Cross Stitch	2
Embroidery	3
Knitting	4
Machine Sewing	5
Needlework	6
Quilts, Comforters	7

**Quilts/Comforters—Division 607**

Class Name:	Class Number:
Baby Quilts	1
Lap Quilts	2
Bed Quilts	3
Original Design	4
Wall Hanging, Over 24"	5
Wall Hanging, 24" or less	6
Any Other	7

**Department 7 Open Class Grain, Forage & Crops**

**General Information:** Agricultural exhibits must be grown in Big Horn County & be the product of the current year except corn, threshed forage, threshed grain, beans, & peas which may be the product of current or prior year, but must not have been shown at any fair before. Treated exhibits are prohibited. Premiums will not be awarded for inferior exhibits even if there is no competition. All threshed grain samples shall measure 1 pint. Sheaf grain shall be 2 1/2" at diameter below the heads. Forage samples shall be 3" at the butt. Use 1/2' tape to tie all sheaves.

**Baled Hay—Division 700**

Class Name:	Class Number:
Alfalfa Hay	1
Cultivated or Introduced Grass	2
Grass Hay	3
Mixed Hay	4
Oat Hay	5
Any Other	6

**Threshed Forage & Grain—Division 701**

Class Name:	Class Number:
Alfalfa, Forage	1
Canola, Forage	2
Grass, Forage	3
Sanfoin, Forage	4
Sorghum, Forage	5
Wheatgrass, Forage	6
Any Other, Forage	7
Corn, Silage Grain	8
Oats, Grain	9
Barley, Grain	10
Any Other Grain	11

**Sheaf Forage for Hay—Division 702**

Class Name:	Class Number:
Alfalfa	1
Clover	2
Grass	3
Millet	4
Rye	5
Sorghum	6
Vetch	7
Any Other, List Variety	8
Best Display, 5 Sheaves	9
Pasture Grass by Club	10

**Potatoes—Division 703**

Class Name:	Class Number:
Red Variety	1
White Variety	2
Yellow Variety	3

**"SO BIG" - Division 704-705**

Division 704—8 yrs. & younger    Division 705 9yrs & older

Class Name:	Class Number:
Cabbage	1
Muskmelon	2
Pumpkin	3
Squash	4
Tomato	5
Turnip	6
Zucchini	7

**Sugar Beets—Division 706**

Single	1
Three	2

**Big Horn County Farm Bureau Hay Show—Division 707**

Class Name:	Class Number:
Mixed Hay	1
Alfalfa Hay	2
Grass Hay	3
Cubed Hay	4

## Department 8 Open Class Beef Cattle

### General Information:

All entries must be registered or registrations applied for.

### Beef Cattle—Division 800-805

Division 800 - Polled or Horned Hereford  
 Division 801—Black Angus  
 Division 802—Red Angus  
 Division 803—Shorthorn  
 Division 804—Any Other Breed  
 Division 805—Cross Breed

Class Name:	Class Number
Jr. Heifer Calf	1
Born Jan 1-April 30 of current year	
Sr. Heifer Calf	2
Born Sept 1– Dec 31 of previous year	
Summer Yearling Heifer	3
Born May 1– Aug 31 of previous year	
Spring Yearling Heifer	4
Born March 1-April 30 of previous year	
Jr. Yearling Heifer	5
Jan 1– Feb 28 of previous year	
Sr. Yearling Heifer	6
One year under 2 years old	
Cow	7
Over 2 years old	
Jr. Bull Calf	8
Born Jan 1– April 30 of current year	
Sr. Bull Calf	9
Born Sept 1– Dec 31 of previous year	
Summer Yearling Bull	10
Born May 1– Aug 31 of previous year	
Spring Yearling Bull	11
Born March 1– April 30 of previous year	
Jr. Yearling Bull	12
Born Jan 1–Feb 28 of previous year	
Sr. Yearling Bull	13
1 year under 2 years old	
Bull	14
Over 2 years old; (Show & Go)	
Commercial Feeder	15
Commercial Feeder Heifer	16

## Department 9 Open Class Dairy Cattle

### General Information:

All entries must be registered or registrations applied for.

### Dairy Cattle—Division 900-905

Division 900—Brown Swiss  
 Division 901—Guernsey  
 Division 902—Holstein  
 Division 903—Jersey  
 Division 904—Any Other Recognized Breed  
 Division 905—Cross Breed

Class Name:	Class Number:
Jr. Heifer Calf	1
3-6 months old	
Sr. Heifer Calf	2
7-12 months old	
Jr. Yearling Heifer	3
13-18 months old	
Sr. Yearling Heifer	4
19-24 months old but not yet fresh	
Two Year Old Cow	5
Over Springing or Milking 25-36 months old	
Three Year Old Cow	6
37-48 months old	
Four Year Old Cow	7
49-60 months old	
Aged Cow	8
5 years & Over, still in show condition	
Best Three Females	9

Any age, all bred & owned by 1 Exhibitor. Exhibitor limited to one group

**BASIN PROCESSING**

LEG LOIN RIB BREAST  
 FLANK BREAST  
 ROUND

CHUCK RIB  
 BRISKET PLATE FLANK  
 ROUND

HAM  
 BACK FAT  
 TENDERLOIN  
 SIDE RIB  
 BACON BELLY BACON  
 PORK

**JOZIE SCHWARZ**  
**307-568-2234**  
**1005 CLOUD PEAK AVE BASIN, WY**

## Department 10 Open Class Dairy Goats

**General Information:**

Only does will be shown.

No horned animals will be allowed to show in pure-bred dairy goat classes.

There are no established pre-show milk out. Exhibitors should milk out at their own discretion.

**Dairy Goats—Division 1000-1006**

Junior—Does under 25 months that have never freshened

Senior—Animals that have freshened, including dry milkers

Division 1000—La Mancha

Division 1001—Nubian

Division 1002—Alpine

Division 1003—Saanen

Division 1004—Pygmy

Division 1005—Nigerian Dwarf

Division 1006—Any Other Recognized Breed

Class Name:	Class Number:
-------------	---------------

Junior Division

Jr. Kids	1
Sr. Kids	2
Jr. Yearlings	3
Sr. Yearlings	4

Senior Division

Does Under 2 years old	5
Does (2-under 3 years)	6
Does (3—under 5 years)	7
Does (5 years & Over)	8

## Department 11 Open Class Breeding Meat Goat

**General Information:**

Fitting of meat goats will be to the discretion of exhibitor but the animals are to be shown in natural conformation and color.

Breeding Meat Goats may have horns.

**Breeding Meat Goats—Division 1100-1102**

Division 1100—Percentage Boer (1/2-7/8)

Division 1101—Full Blood Boer

Division 1102—All Other Meat Breeds

Class Name:	Class Number:
-------------	---------------

DOE CLASS:

Doe Kid	1
3 months to under 6 months	
Doe Kid	2
6 months to under 9 months	
Doe Kid	3
9 months to under 12 months	
Yearling Doe	4
12 months to under 24 months	
2 Year Old Doe	5
24 months to under 36 months	
3 Year Old Doe	6
36 months or older	
Best Pair of Does	7
Any age, owned by same exhibitor	

BUCK CLASS

Buck Kid	8
3 months to under 6 months	
Buck Kid	9
6 months to under 9 months	
Buck Kid	10
9 months to under 12 months	
Yearling Buck	11
12 months to under 24 months	
2 Year Old Buck	12
24 months to under 36 months	
3 Year Old & Older Buck	13
36 months or older	
Best Pair of Bucks	14
Any age, owned by same exhibitor	



## Department 12 Open Class Swine

### Swine—Division 1200-1204

Division 1200—Duroc

Division 1201—Hampshire

Division 1202—Yorkshire

Division 1203—Any Other Breed

Division 1204—Crossbreed

Class Name: Class Number

Jr. Boar 1

Born before March 1 of current year

Yearling Boar 2

Born Feb 1st, previous year– March 1 Current year

Boar Pig 3

Born after March 1, current year

Aged Sow 4

Over 2 years old

Yearling Female 5

Born March 1, previous year-May 1, current year

Gilt 6

Born after May 1 of current year

Get of Gilt 7

Fat Barrow 8

Feeders, Pen of 3 9

Under 170 lbs.

## Department 13 Open Class Sheep Continued

### Sheep—Division 1300-1307

Division1300—Columbia

Division1301—Dorset

Division1302—Hampshire

Division1303—Rambouillet

Division1304—Suffolk

Division1305—Targhee

Division1306—Whether, type breeds

Division1307—Any Other Breed

( list on entry form)

Class Name Class Number

#### Ram Class

Ram 1

over 2 years

Ram 2

1 year to under 2 years

Ram Lamb 3

Jan1—Feb15 current year

Ram Lamb 4

Feb16—Jun1 current year

#### Ewe Class

Ewe 5

over 2 years

Ewe 6

1 year to under 2 years

Ewe Lamb 7

Jan 1—Feb 15 current year

Ewe Lamb 8

Feb 16—Jun 1 of current year

Get of Sire 9

Any age, either or both sexes, 4 head

Flock 10

1 ram, Two 2 year old ewes

## Department 13 Open Class Sheep

### General Information:

All breeding sheep, yearlings, & older must be shorn after Jan 1st of current year.

All open class sheep must be brought to the fairgrounds by

Friday at 10 am. All open class sheep can leave following the show, unless they are being shown in 4-H & FFA.

There will be no muzzles of any type allowed on livestock unless approved by a licensed Wyoming Veterinarian in writing on the health certificate.

All Sheep must not show any sign of active fungus.



## Department 14 Open Class Halter Horse

### **General Information:**

- Participants must wear a long sleeve button down for all classes.
- Grade horses should be entered according to breed type.
- All open class halter horses must be on grounds by noon.
- Performance horses must be on grounds a hour before an event.
- Shetlands must not be over 54” .
- Entries are judged on conformation, breed type, and way of going. Each entry will be judged against the breed standards from their respective registries.
- Limited number of stalls will be available. Reservation will be on a first come first serve basis.
- Any person/parent moving another persons horse or utilizing another persons stall without written permission will be disqualified from the horse show.
- Any questions/comments should be directed towards the horse superintendent.
- Must be 18 years + to show stallions.
- Leave Classes in order of placement.
- A youth show entry cannot be entered in the same open horse class. First & second place from the youth show are automatically entered in the open class if the class have been opened.
- Breeds with no entries may be dropped from future fairs.

### **Halter Horse– Division 1400-1410**

- Division 1400—Appaloosa
- Division 1401—Arabian
- Division 1402—Morgan
- Division 1403—Paint/Pinto
- Division 1404—Palomino
- Division 1405—Pony
- Division 1406—Quarter Horse
- Division 1407—Thoroughbred
- Division 1408—Fox Trotter
- Division 1409—Miniatures
- Division 1410—Any Other Breed

Class Name:	Class Number:
<u>Filly Class</u>	
Filly, Yearling	1
Filly, 2 year old	2
Filly, Current Year	3
<u>Mare Class</u>	
Mare, 3 year old	4
Mare, 4-6 year old	5
Mare, 7+ Year old	6
<u>Stallion Class</u>	
Stallion, Yearling	7
Stallion, 2 year old	8
Stallion, 3 year old	9
Stallion, 4+ year old	10
<u>Gelding Class</u>	
Gelding, Yearling	11
Gelding, 2 year old	12
Gelding, 3 year old	13
Gelding, 4-6 year old	14
old Gelding, 7+ year old	15
<u>Colt Class</u>	
Colt, current year	16

## Department 15 Open Class Performance Horse

**General Information:** Participants MUST wear long sleeve button down shirt for classes.

### **Performance Horse—Division 1500**

Class Name:	Class Number:
English Hunter Hack	1
Hunt Seat Equitation	2
Hunter Under Saddle	3
Western Horsemanship	4
Western Pleasure	5
Western Riding	6
Reining	7
Working Cow Horse	8
Ranch Riding	9
Programmed Ride	10
Walk/Trot	11
2 Handed Snaffle Bit (Int & Sr Only)	12
Ranch Trail Class	13



# Department 17 Open Class Rabbits

**General Information:**

- All rabbits exhibited must have a permanent legible tattoo in the left ear.
- If an animal is shown in a fur class it must have been shown in its respective breed class. Animals disqualified for reasons other than health may still show in the fur class.
- Fryer fur animals should be shown out of a meat pen only.

**Meat Rabbits—Division 1700-1705** Buck or Doe Any Age

6-Class Breeds

- Division 1700—Junior Doe
- Division 1701— Intermediate Doe
- Division 1702—Senior Doe
- Division 1703—Junior Buck
- Division 1704—Intermediate Buck
- Division 1705—Senior Buck

Class Name:	Class Number:
Californian	1
Flemish	2
French Lop-Broken	3
French Lop- Solid	4
New Zealand, All Varieties	5
Satin, White	6
Satin, All Varieties	7
Any Other Six Class Purebred	8
Any Other Six Class Crossbred	9

4-Class Breeds

Angora English, All Varieties	10
Angora French, All Varieties	11
Dutch, All Varieties	12
Himalayan	13
Holland Lop	14
Jersey Woolly, All Varieties	15
Mini lop Colored Pattern	16
Mini Lop Broken Pattern	17
Mini Rex	18
Netherland Dwarf	19
Polish	20
Rex Broken Pattern	21
Rex Colored Pattern	22
Any Other Four Class Purebred	23
Any Other Four Class Crossbred	24
Meat Pen of 3 Rabbits	25
limited 1 pen per exhibitor	
Single Fryer	26
limited 1 entry per exhibitor	

**Rabbit Fur & Wool—Division 1706-1707**

Division 1706—Fur

Division 1707—Wool

Class Name: Class Number:

Fur Class

Normal Fur, White Only	1
Normal Fur, all colors-not white	2
Rex, White Only	3
Rex, All Colors—not white	4
Satin, White Only	5
Satin, All colors—not white	6
Fryer Fur, All Colors	7
All Other Fur Breeds, All Colors	8

Wool Class

Wool, White	1
Wool, All Colors	2

**Brooke Fink, CRPC™**

**Financial Advisor**

**Powell, WY 307-219-1004**







"We Are . . .  
**WYOMING  
BENTONITE!**"<sup>sm</sup>

# THANK YOU

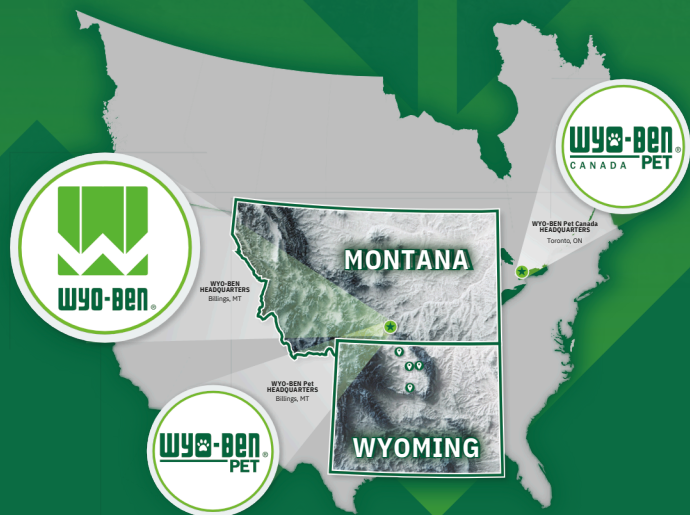
TO OUR 210 INCREDIBLE  
WYOMING-BASED EMPLOYEES.

As we celebrate our 75th year operating in the Big Horn Basin, we want to thank our employees. Many who come from families whose fathers, mothers, and grandfathers made their career at Wyo-Ben.

**WE WOULD NOT BE HERE  
TODAY WITHOUT YOU.**



[www.wyoben.com](http://www.wyoben.com)



 @WyoBenMT  @WyoBenInc  @wyo\_ben  @WyoBen

# Department 18 Education Exhibits School Art

- All Schools in Big Horn County may send exhibits. All exhibits must have been prepared during the school year immediately preceding the fair under the direction of a teacher.
- Ribbons will be given for places 1-6 in each class number. All other exhibitors will receive participant ribbons.
- Each school will be responsible for having all its exhibits in order, according to grade level K-12 within each division and class number, prior to fair time. This will speed up hanging on set-up day.
- Items placed in a division and class will be accepted in good grace. However, please contact the fair office if there are any questions in placement before judging begins.
- There will be an Overall Best School Exhibitor award of \$25.

**Education Exhibits—Division 1800-1804**

- Division 1800- Assisted Education
- Division 1801—Elementary
- Division 1802—Middle School
- Division 1803—High School
- Division 1804—Pre-School

Class Name:	Class Number:
Flat Art Work	1
Design, Flat	2
Painting	3
Sculpture	4
Crafts	5
Posters	6
Booklets	7
Map Drawing	8
Relief Maps	9
Class Subjects	10
Individual Projects	11
Science Collection	12
Torn Paper	13
Combined Media	14
Any Other	15

**DIVISIONS:**

**PRE-SCHOOL:** Three exhibits per class number

**SPECIAL EDUCATION:** Special education pupils ONLY. Judged separately from other exhibits. Exhibitors in this division may not exhibit in other divisions, use same class number on premium list. Must be marked special education.

**SCHOOL GRADES:** Classroom may enter three exhibits per class number. Competition will be on a per grade level basis.

**HOME SCHOOL:** Three exhibits per class number.



Tire & Auto

**ADAM & RAIN POTTER**  
307-388-9089

**FIRST BANK**  
OF WYOMING  
DIVISION OF GLACIER BANK

Member FDIC

## Department 19 Junior Show Cattle

**General Rules:** Any violation of the following rules will result in immediate disqualification of the exhibitor in the Junior Beef Show. Further forfeiture of awards, future privileges & disciplinary action may be taken. Tie Out 7pm–8am Only

- A. The animals are to be shown in their natural conformation & color.
- B. The showing of livestock of any ineligible age is prohibited.

Bulls older than 2 years must be shown with a nose lead. All animals may be registered or high grade stock.

### **Breeding Beef—Division 1900–1904**

- Division 1900—Black Angus
- Division 1901—Hereford
- Division 1902—Shorthorn
- Division 1903—All Other Breeds
- Division 1904—All Other Crossbreeds

### **Bull Breeds—Division 1905-1909**

- Division 1905—Black Angus
- Division 1906—Hereford
- Division 1907—Shorthorn
- Division 1908— All Other Breeds
- Division 1909—All Other Cross Breeds

Class Name:	Class Number
Jr. Heifer Calf born Jan 1—Apr 30 of current year	1
Sr. Heifer Calf born Sept 1-Dec 31 of previous year	2
Summer Yearling Heifer born May 1-Aug 31 of previous year	3
Spring Yearling Heifer born Mar 1-Apr 30 of previous year	4
Jr. Yearling Heifer born Jan 1-Feb 28 of previous year	5
Sr. Yearling Heifer one year under 2 years old	6
Cow over 2 years old	7
Jr. Bull Calf calved between Jan 1-Apr 30	1
Bull Calf calved between June 1—Dec 31 of previous year	2

### **Market Beef Division 1910**

\*Any market beef not meeting 1150 lbs. will automatically be entered into a feeder class\*

Class Name:	Class Number:
Market Beef	1
Pen of Three same 4-H club/FFA chapter/ one steer per exhibitor/2 pens per club/chapter	2
Bucket Calf	3
Big Horn County Bred to Fed <i>must meet minimum weight requirements</i>	4

## Department 20 Junior Show Dairy Cattle

**General Rules:** Any violation of the following rules will result in immediate disqualification of the exhibitor in the Junior Dairy Show. Further forfeiture of awards, future privileges & disciplinary action may be taken. Tie-Out 7pm-8am Only

- A. The animals are to be shown in their natural conformation and color.
- B. The showing of livestock of any ineligible age is prohibited.

### **Dairy Cattle—Division 2000-2005**

- Division 2000 —Brown Swiss
- Division 2001—Guernsey
- Division 2002 —Holstein
- Division 2003 — Jersey
- Division 2004 —Any Other Recognized Breed
- Division 2005 —Cross Breed

ClassName:	Class Number
Jr. Heifer Calf 3-6 months old	1
Sr. Heifer Calf 7-12 months calf	2
Jr. Yearling Heifer 13-18 months old	3
Sr. Yearling Heifer 19-24 months old but not fresh	4
Two Year Old Cow over spring time or milking 25-36 months	5
Three Year Old Cow 37-48 months old	6
Four Year Old Cow 49-60 months old	7
Aged Cow 5 years & over, still in show condition	8
Best Three Females any age, all bred & owned by 1 exhibitor. Exhibitor limited to 1 group.	9

**Showmanship is listed under FFA and 4-H**

### **Junior 4-H & FFA Breeder Award**

An award will be given to the Big Horn County Breeder of highest placing market lamb, steer, and swine. Livestock must have been bred & raised in Big Horn County. This recognition will be awarded at the beginning of the Jr. Livestock Sale.

## Department 21 Junior Show Dairy Goat

**General Rules:** Does only will be allowed to show in the dairy goat show. No horned animals will be allowed to show in purebred dairy goat classes. Pygmy goats will be judged by their own score card. Pygmies will be shown "on a leash" Fiber goats will be judged by their own breed standards.

### **Dairy Goat—Division 2100-2108**

Division 2100—Alpine

Division 2101—Lamancha

Division 2102—Nubian

Division 2103—Saanen

Division 2104—Any Other Purebred

Division 2105— Recorded Grade

Division 2106—Nigerian Dwarf

Division 2107—Pygmy Goat

Division 2108—Fiber Goat, Open to Angora & Cashmere does

Class Name: Class Number:

#### JUNIOR DOES: 24 months or younger, never been freshened

Junior Kid, 0-3 months	1
Senior Kid, 3-6 months	2
Junior Yearling, 9-12 months	3
Senior Yearling, 1yr –under 2 yrs.	4
Junior Does, Under 1	5
<u>SENIOR DOES: Does that have freshened, including dry milkers</u>	
Under 2 Years in Milk	6
2-3 Years	7
3 & Under 5 Years	8
5+ Years	9
Best Udder	10
Senior Doe, 1 yr or older	11

## Department 22 Junior Show Meat Goat

### **Breeding Meat Goat—Division 2200 - 2203**

Division 2200—Full Blood Boer

Division 2201—Percentage Boer, 1/2-7/8 blood

Division 2202—All Other Meat Breeds

Class Name: Class Number:

#### DOE CLASS

Doe Kid	1
3 months to under 6 months	2
Doe Kid	3
6 months to under 9 months	
Doe Kid	3
9 months to under 12 months	

## Department 22 Continued

Class Name: Class Number:

Yearling Doe	4
12 months to under 24 months	
2 Year Old Doe	5
24 months to under 36 months	
3 Year and Older Doe	6
36 months or older	
Best Pair of Does	7
any age, owned by same exhibitor	
<u>BUCK CLASS</u>	
Buck Kid	8
3 months to under 6 months	
Buck Kid	9
6 months to under 9 months	
Buck Kid	10
9 months to under 12 months	
Yearling Buck	11
12 months to under 24 months	
2 Year Old Buck	12
24 months to under 36 months	
3 Year Old & Older Buck	13
36 months or older	
Best Pair of Bucks	14
any age, owned by same exhibitor	

### **Market Goats—Division 2203**

Market goats must be uniformly slick shorn with 3/8" hair or less at the time of arrival. Leg may have hair up to the hock & knee only. Market goats may be a whether or non bred does. They must have milk teeth in place. The slapping or lifting of market goats in the show arena is not allowed. All goats must have all four feet on the ground during judges inspection or handling. Lifting feet off the ground or placing on any support or altered ring surface is NOT acceptable. Exhibitors will receive one warning: 2nd offense will result in automatic exhibitor & animal disqualification. Animals will be allowed to show or sell at the judges discretion. Muzzles and/or drenching is allowed provided a licensed veterinarian has approved it in writing on the animals health certificate. Any market goat not meeting 60 lbs. will automatically be entered in to a feeder class and will not be allowed to sell.

Class Name: Class Number:

Market Goat	1
Big Horn County Bred to Fed	2
animal must meet minimum weight requirement	

## Department 23 Junior Show Horse Fun Day

**General Information:** Point accumulation begins for All Around Horse.

### **Division 2300-2303—Timed Events**

Division 2300—Juniors, 8-10 years old

Division 2301—Intermediate, 11-13 years old

Division 2302—Senior, 14-18 years old

Division 2303—Open

Class Name:	Class Number:
Goat Tail Tying, Jr. & Open	1
Dummy Roping	2
Stake Race	3
Goat Tying, Int. Sr & Open	4
Break Away, Int. Sr. & Open	5
Team Sorting, Int. Sr. & Open	6
Team Roping, Int. Sr. & Open	7
Poles	8
Barrels	9
Cannon's Surprise	10

## Department 24 Junior Show Horse Halter

### **Halter Horse Class—Division 2400-2409**

Division 2400— Appaloosa

Division 2401—Arabian

Division 2402—Morgan

Division 2403—Paint/Pinto

Division 2404—Palomino

Division 2405—Pony

Division 2406—Quarter Horse

Division 2407—Thoroughbred

Division 2408—Miniatures

Division 2409—Any Other Recognized Breed

Class Name:	Class Number
Filly, Yearling	1
Filly, 2 Year Old	2
Filly, Current Year	3
Mare, 3 Year Old	4
Mare, 4-6 Year Old	5
Mare 7+ Year Old	6
Gelding, Yearling	7
Gelding, 2 Year Old	8
Gelding, 3 Year Old	9
Gelding, 4-6 Year Old	10
Gelding, 7+ Year Old	11
Colt, Current Year	12

## Department 25 Junior Show Horse Performance

### **Performance Horse Class—Division 2500-2502**

Division 2500—Junior Class

Division 2501—Intermediate Class

Division 2502—Senior Class

Class Name:	Class Number:
English Hunter Hack	1
Hunt Seat English	2
Hunter Under Saddle	3
Western Horsemanship	4
Western Riding	5
Western Pleasure	6
Reining	7
Working Cow Horse, Int. & Sr.	8
Trail Class	9
Programmed Ride	10
Ranch Riding	11
2 Handed Snaffle Bit (Int & Sr. only)	12
Ranch Trail	13

### **Horse Rules:**

- State 4-H Horse Event rules are being used as guidelines for new entries.
- Participants must wear long sleeve button up shirts in all horse classes.
- Junior entries to Open Class Horse Shows (see open class requirements) Jr. Show Halter Classes are open only to qualified BHC 4-H/FFA Members.
- Unsportsmanship conduct will NOT be tolerated & the offending exhibitor will forfeit premiums & may immediately be dismissed from the Fairgrounds
- Credentials verifying ownership should be available upon request.
- There will be NO stallions allowed in the youth horse show except foals of current year.
- Horses known to kick must have a red flag in their tail. Superintendent has the right to flag any horse.
- Anyone moving another persons horse or utilizing without written permission will not be allowed to show.
- Individual horses may be entered in one halter class only
- Do not exit class until ribbons have been awarded. Leave class in the order of placement.
- Any questions should be directed to superintendent.

## Department 25 Continued

- ENTRIES ARE JUDGED ON CONFORMATION, BREED TYPE, QUALITY, & WAY OF GOING. EACH ENTRY WILL BE JUDGED AGAINST THE BREED STANDARDS FROM THEIR RESPECTIVE REGISTERIES.
- Championship Class can be entered by officials only.
- ALL HORSE EXHIBITORS: Horses will be allowed on the grass area South of the main hall. No horses will be allowed on the grass area East of the main hall, NOT in the Midway (food court) Horses are to be LED on any grass area. No riding double, bareback, or barefoot! Please be courteous of other people attending fair!
- Halter classes & showmanship class are NOT included in High Point. Performance or Timed Awards.
- Safe horsemanship guidelines MUST BE FOLLOWED at all times during the week. All animals must be under control at all times. Unruly animals may be excused at any time.
- In the interest of safety, an exhibitor's equine may be saddled, bridled, & tack change made by someone other than the exhibitor.
- Working Cow Horse will be open to Seniors for State Competition and Sr. & Int. for County. Class limit is 12. Working Cow Horse Class must have a minimum of 3 entries or the class will be cancelled. Exhibitors must have previous experience to enter this class.
- Contestants competing in this division must certify that they have owned or leased their horses by May 1st of current year.
- There will be a final 5 minute warning before last call. Members will be denied entry into the class if not present for the last call into the ring.
- English Classes: An approved ASTM or equivalent safety helmet with a safety harness of leather or plastic that is permanently attached to or encompassing the helmet is required for all English Classes. (an elastic chin strap is not acceptable) The most recently approved helmets are highly recommended.
- Combined classes will be judged according to class entry but will be shown with other classes when less than 2 are entered.
- Any exhibitor 14+ years may enter 2 horses in performance classes. Must have both saddled & ready.

## Department 26 Junior Show Rabbit

If an animal is showing in a fur class, it must have been shown in its respective breed class. Animals disqualified for reasons other than health may still show in the fur class. Fryer fur animals should be shown out of a meat pen only.

There are no intermediate classes for Four Class Breeds. Senior Does & Bucks in these breeds must be 6 months & older. Meat pen & fryer must be separate rabbits from other classes.

### **Rabbit Show—Division 2600– 2605**

Division 2600—Jr. Doe (up too 6 months)

Division 2601— Int. Doe (6-8 months)

Division 2602—Sr. Doe (8 + months)

Division 2603—Jr. Buck (up to 6 months)

Division 2604—(6-8 months)

Division 2605—(8+ months)

Class Name: Class Number:

#### 6-Class Breeds

Californian	1
Flemish	2
French Lop-Broken	3
French Lop - Solid	4
New Zealand, All Varieties	5
Satin, White	6
Satin, All Varieties	7
Any Other Six Class Purebred	8
Any Other Six Class Crossbred	9

#### 4-Class Breeds

Angora, English, All Varieties	11
Angora French, All Varieties	12
Dutch, All Varieties	13
Himalayan	14
Holland Lop	15
Jersey Woolly, All Varieties	16
Mini Lop Colored Pattern	17
Mini Loop Broken Pattern	18
Mini Rex	19
Netherland Dwarf	20
Polish	21
Rex Broken Pattern	22
Rex Colored Pattern	23
Any Other Four Class Purebred	24
Any Other Four Class Crossbred	24

#### Meat Class

Meat Pen of 3 (limited 1 pen per exhibitor)	25
Single Fryer (limited 1 entry per exhibitor)	26

## Department 26 Continued

Class Name:	Class Number:
<u>Fur Class:</u>	
Normal Fur, White Only	27
Normal Fur, All Colors-not white	28
Rex, White Only	29
Rex, All Colors—not white	30
Satin, White Only	31
Satin, All Colors—not white Fryer	32
Fur, All Colors	33
All Other Fur Breeds, All Colors	34
<u>Wool Class</u>	
Wool, White	35
Wool, All Colors	36

## Department 27 Junior Show Poultry

Poultry entered in the Junior Show are not eligible for Open Class. No Fowl will be allowed to compete in more than one class. Classes will be judged based on the American Standards of Perfection. Pigeons will be judged as singles. Barn Hours are 7am-9pm daily. The barn will be locked at night.

### **Chickens –Division 2700-2713**

- Division 2700—Cock, Male 1 Year & Older
- Division 2701—Cockerel, Male Less than 1 Year
- Division 2702—Hen, Female 1 Year & Older
- Division 2703—Pullet, Female Less than 1 Year
- Division 2704—Mature Trio (1 cock 2 hens same breed)
- Division 2705—Young Trio (1 cockerel 2 pullets same breed)
- Division 2706—Fryer Pen of Cockerels
- Division 2707— Fryer Pen of Pullets

Class Name:	Class Number:
<u>Standard Poultry Class</u>	
American	1
Asiatic	2
English	3
Mediterranean	4
Continental (N. European, Polish, French)	5
Other Breeds	6
Fryer Pens	7
<u>Bantam Poultry Class</u>	
Game Breeds	8
Single Comb, Clean—Legged	9
All Other Comb, Clean—Legged	10
Feather—Legged Bantam	11
Production Class, 3 Females	12

Pen of 3, Cocks	13
Pen of 3, Hens	14

### **Turkey—Division 2708**

Class Name:	Class Number:
Old Tom, Male 1 year & Older	1
Young Tom, Male less than 1 year	2
Old Hen, Female 1 year & older	3
Young Hen, Female less than 1 year	4
Mature Trio (1 tom, 2 hens over 1 year; same breed & variety)	5
Young Trio (1 tom, 2 hens under 1 year; same breed & variety)	6

### **Ducks—Division 2709**

To classify your duck's weight class please visit:<https://amerpoultryassn.com/accepted-breed-varieties/>

- A. Old Drake, Male 1 year & older
- B. Young Drake, Male under 1 year
- C. Old Hen, Female 1 year & older
- D. Young Hen, Female under 1 year

Class Name:	A	B	C	D
Heavy Weight	1	2	3	4
Medium Weight	5	6	7	8
Light Weight	9	10	11	12
Bantam Weight	13	14	15	16

### **Geese—Division 2710**

- A. Gander, Male 1 year & older
- B. Young Gander, Male under 1 year
- C. Goose, Female 1 year & older
- D. Young Goose, Female under 1 year

Class Name:	A	B	C	D
Heavy Weight	1	2	3	4
Medium Weight	5	6	7	8
Light Weight	9	10	11	12

### **Ornamental Birds—Division 2711**

Class Name:	Class Number:
Guinea Fowl	1
Peacocks	2
Pheasant	3
Quail	4
Any Other Ornamental Birds	5

### **Pigeons—Division 2712**

Class Name:	Class Number:
Roller	1
Any Other	2

### **Eggs—Division 2713**

Eggs, 1 Dozen Brown	1
Eggs, 1 Dozen White	2
Eggs, 1 Dozen Any Other	3

## Department 28 Junior Show, Market Sheep

Lambs entered in this division may be ewes or wethers. All Market Lambs must be totally & uniformly slick shorn within 10 days of fair. No more than 1/4". Lambs will be checked at scale to determine breed & length of wool. The slapping or lifting of lambs in the show arena is not allowed. All lambs must have all 4 feet on the ground during judges inspection & handling. Exhibitors will receive one warning. 2nd offenses will result in automatic exhibitor & animal disqualification. Lambs must NOT show any sign of active fungus. Any lamb showing signs of rectal prolapse shall be disqualified & must be immediately removed from the show area by exhibitor. Lambs over 110 lbs. may be selected to show in the market class or orphan class but not both. Any lamb not meeting minimum weight requirements will be entered into the feeder class and will not be allowed to sell.

### Market Lamb—Division 2800-2803

Division 2800—Black Face Market Lamb  
 Division 2801—Speckled Face Market Lamb  
 Division 2802—White Face Market Lamb  
 Division 2803—Hair Breed Market Lamb

Class Name:	Class Number:
Initial Weight Class	1
Pen of 3 Market Lambs	2
Orphan Lamb *BHC Only	3
Big Horn County Bred to Fed	4

animal must meet the minimum weight requirement

## Department 29 Junior Show, Breeding Sheep

All breeding sheep, yearlings & older, must be shown after Jan 1 of current year

A flock shall consist of 1 yearling or ram lamb, 2 yearling ewes, and 2 ewe lambs which are owned by exhibitor. Get of Sire shall consist of 4 lambs or yearlings, or both of either sex, from 1 sire, which were bred & owned by exhibitor. All breeding sheep will show by breeds. The animals are to be shown in their natural conformation & color

Sheep showing signs of rectal prolapse will be disqualified & must be immediately removed from fairgrounds by the exhibitor.

Muzzles are allowed provided a licensed veterinarian has approved it in writing on the animal health certificate. Sheep must not show sign of any active fungus.

### Breeding Sheep Show—Division 2900-2907

Division 2900—Columbia  
 Division 2901—Dorset  
 Division 2902—Hampshire  
 Division 2903 — Rambouillet  
 Division 2904— Suffolk  
 Division 2905 — Targhee  
 Division 2906— Whether, type breeds  
 Division 2907— Any Other Breed

Class Name:	Class Number
<u>Ram Class:</u>	
Ram	1
Winter Ram Lamb, born Jan1-Feb 15	2
Spring Ram Lamb, born Feb 16-June 1	3
Pen of 2 Ram Lambs	4
<u>Ewe Class:</u>	
Ewe, 1 year-under 2 year	5
Winter Ewe Lamb, born Jan 1-Feb 15	6
Spring Ewe Lamb, born Feb 16-Jun 1	7
Pen of 2 Ewe Lambs	8
Best 4 Head, both Sexes	9
Flock	10
<u>County Only:</u>	
Aged Ewe, 2 years +	11
Aged Ram, 2 years +	12



**MILLER'S FAB**  
 Being the BEST for 48 Years  
 Est. 1978

- Machining
- Trailer Parts
- Hydraulic Hoses
- Bolts - Grade 5&8
- Steel Sales
- Welding
- Ag Repair
- Bearings

307-548-6346 | 800-554-6546  
 80 Highway 14A • Lovell, WY 82431



**WELDING**  
Strong. Precise. Reliable.



**MACHINE SHOP**  
Custom parts and machining done right.



**RADIATOR REPAIR**  
Keep your engine running cool and strong.

*It Ain't Broke If We Can't Fix It!*

**CALL US TODAY!**  
**307-548-6346**



**EXPERIENCED**  
Decades of hands-on skill and knowledge.



**DEPENDABLE**  
Honest work, fair prices, and on-time service.



**BUILT TO LAST**  
We fix it right so it stays fixed.

**PROUDLY SERVING OUR COMMUNITY SINCE 1978**

Department 30 Junior Youth Show, Market Swine

No oil or powder allowed on hogs. Water Only.

Hogs weighing below 225 lbs. and above 320 lbs. will NOT be allowed to sell.

**Market Swine—Division 3000**

Class Name:	Class Number:
Market Swine	1
Pen of Three Market Swine	2

Swine must be from same club or chapter, 225+lbs., any breed  
Big Horn County Bred to Fed 3  
animal must meet the minimum weight requirement.



**Minchow's Service** LLC  
307-548-7211  
Lovell, Wyoming

**Jared Minchow**  
Managing Member

**Zach Blain - Manager**

Bulk Fuel & Oil, Tires, Service  
Large Truck, Farm and Construction Tires Sales/Service  
Mobile Tire Service Truck

**Sinclair**  
**HANKOOK TOYO**  
**Firestone**

**Mobil** Lubricants  
**YOKOHAMA**  
**FALKEN**  
**COOPERTIRES**

Department 31 Junior Youth Breeding Swine

No oil or powder allowed on hogs. Water Only.

No animals farrowed prior to the current year will be shown.

**Breeding Swine Division 3100-3105**

- Division 3100—Duroc
- Division 3101—Yorkshire
- Division 3102—Hampshire
- Division 3103—Crossbred
- Division 3104—Any Other Colored Breed
- Division 3105—Any Other White Breed

Class Name:	Class Number
-------------	--------------

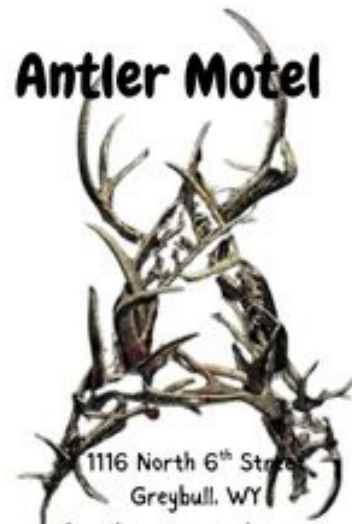
Gilt Class

Jr. Gilt	1
farrowed after March 1 of current year	
Sr. Gilt	2
farrowed between Jan 1 & Feb 28 of current year	

Boar Class

Jr. Boar	3
farrowed after March 1 of current year	
Sr. Boar	4
farrowed between Jan 1—Feb 28 of current year	

**Antler Motel**



1116 North 6<sup>th</sup> Street  
Greybull, WY  
Antlermotel.com  
antlermotel@outlook.com  
307-765-4404

## Department 40 Big Horn County FFA

### **Agricultural Mechanics –Division 4000**

Class Name:

Class Number:

#### **BHC FFA Displays**

Display of Posters  
phases of Ag Safety, mounted on display board

Exhibit of Reconditioned Tools  
for home use, mounted on display board

Skill Board, Arc-Welding  
minimum of 4 different skills

Skill Board, Mig-Welding  
minimum of 4 different skills

Skills Board, Oxygen/Acetylene Welding  
minimum of 4 different skills

Skills Board, Electricity  
minimum of 4 different skills

Skills Board, Any 4 Skills  
Ex. Forage, rope, mechanical, etc.

#### **BHC FFA Wood Projects**

Wood Construction, In home use  
Ex. Cutting boards, tables, cabinets

Wood, Cabinets & Box Projects  
Ex. Showbox, feed storage, etc.

Wood, Farm & Ranch Use  
Ex. Sawhorse, saddle rack, etc.

Wood, Farm & Ranch Convenience  
Ex. Picnictables, benches, chairs, etc.

Wood, Small Service Utility Equipment  
Ex. Nailbox, packsaddle, etc.

Wood, Small Feeding Structures  
Ex. Feed boxes & bunks

Wood, Large Feeding Structures  
Ex. Feed bunk & hay feeders

Wood, Stock Racks

Wood, Any Other Farm/Ranch Related

#### **BHC FFA Wood/Metal Projects**

Wood/Metal, Farm & Ranch Convenience  
Ex. Picnictables, benches, chairs, etc.

Wood/Metal, Small Service Utility Equipment  
Ex. Signs, Saddle Rack, Ladder

Wood/Metal, Pickup Flatbed Wood/Metal,  
Equipment Utilizing Power  
must contain a moving part

Wood/Metal, Small Feeding Structures

Wood/Metal, Large Feeding Structures

Wood/Metal, Stock Racks

Wood/Metal, Any Other Farm/Ranch Related

Class Name:

Class Number:

#### **BHC FFA Metal Projects**

Metal, Small Hand Tools 26

Metal, Hand crafted Hardware 27

Metal, Small Shop Equipment 28  
Ex. Light stand, bolt bins, racks, etc.

Metal, Medium Shop Equipment 29  
Ex. Oxy/Ac Cart, welding table, etc.

Metal, Large Shop Equipment 30  
Ex. Hoists, engine stand, etc.

Metal, Small Service Utility Equipment 31  
Ex. Branding irons, saddle rack, etc.

Metal, Box Type Projects 32  
Ex. Tool chest, fuel tanks, etc.

Metal, Pickup Conveniences 33  
Ex. Hitches, bumpers, grillguard, bed rack, etc.

Metal, Small Feeding Structures 34  
Ex. feed boxes & bunks

Metal, Large Feeding Structures 35  
Ex. Feed bunks & hay feeders

Metal, Stock Racks 36

Metal, Gates 37

Metal, Portable Panels 38  
minimum of 3 panels

Metal, Fencing Equipment 39  
Ex. Postdriver, tamping bars, pullers, etc.

Metal, Recreational Equipment 40  
ex. Barbecue, fireplace set, roping dummy, etc.

Metal, Plasma Cut (Computer) Large 41

Metal, Plasma Cut (Computer) Small 42

Metal, Plasma Cut (Hand) Large 43

Metal, Plasma Cut (Hand) Small 44

#### **All Other Specific**

Implement Attachments, Large 45

Implement Attachments, Small 46

Livestock Handling Equipment Large 47

Livestock Handling Equipment Small 48

Power Driven Equipment 49  
Ex. Wood splitter, tractor blade, dump box, etc.

Small Platform & Utility Trailers 50

Large Platform & Utility Trailers 51

One & Two Horse Trailers 52

Four Horse or Larger Horse Trailer 53  
must be tandem or triple axle trailer

Gooseneck, Livestock Trailers 54

Gooseneck, Flatbed Trailers 55

**FFA Agronomy—Division 4001**

1. All samples of threshed grain & sheaf samples must conform in size & specifications listed below. All Sheaf samples must be attractively tied in 3 places with blue or gold (yellow) ties. Sheaf grain & forage for seed, leaves should be stripped.

2. Grass Crop Entries prepared & exhibited for competition must have been prepared by the students. Best exhibits of 6 WY plants gathered, mounted & named by student.

3. Static Exhibits will be judged using the Danish System.

Premium Classes: Blue \$5 Red \$4 White \$2

Class Name Class Number:

**BHC FFA**

Common Weed	1
Grasses	2
Legumes	3
Noxious Weeds	4
Poisonous Plants	5

**Sheaf Small Grains 2 1/2" diameter at butt**

Barley, 2 Row	6
Barley, 6 Row	7
Oats	8
Rye	9
Wheat, Spring	10
Wheat, Winter	11

**Sheaf Forage or Grass for Hay 3" diameter at butt**

Alfalfa	12
Brome Grass	13
Clover, Alsike	14
Clover, Red	15
Clover, Sweet	16
Crested Wheat Grass	17
Fescue Grass	18
Meadow Foxtail	19
Mixed Grass, Legume	20
Mixed Grass, 3 or more	21
Oats for Hay	22
Orchard Grass	23
Red Top	24
Reed Canary Grass	25
Rye for Hay	26
Sanfoin	27
Timothy	28
Vetch	29
Intermediate Wheat Grass	30
Slender Wheat Grass	31
Tall Wheat Grass	32
Western Wheat Grass	33
Wheat for Hay	34

4. If a 7th grader has registered for vocational Ag for the coming year as an 8th grader, he/she is eligible to show in FFA.

5. FFA Members are allowed to exhibit at County Fair 2 fairs after graduating high school.

Class Name: Class Number:

**Sheaf Forage or Grass for Seed 2 1/2" in diameter at butt**

Alfalfa	35
Brome Grass	36
Clover, Alsike	37
Clover, Red	38
Crested Wheat Grass	39
Fescue Grass	40
Meadow Foxtail	41
Orchard Grass	42
Reed Canary Grass	43
Timothy	44
Vetch	45
Intermediate Wheat Grass	46
Slender Wheat Grass	47
Tall Wheat Grass	48
Western Wheat Grass	49

**Threshed Forage or Grass Seed**

Alfalfa	50
Brome Grass	51
Clover, Alsike	52
Clover, Red	53
Crested Wheat Grass	54
Fescue Grass	55
Meadow Foxtail	56
Orchard Grass	57
Reed Canary Grass	58
Timothy	59
Vetch	60
Intermediate Wheat Grass	61
Slender Wheat Grass	62
Tall Wheat Grass	63
Western Wheat Grass	64

**Corn**

Corn for Silage, 6 Stalks	65
Shelled Yellow Dent, 2 qtrs.	66
Yellow Dent, 10 ears	67

**Threshold Small Grain**

Barley, 2 Row	68
Barley, 6 Row	69
Oats	70
Rye	71
Wheat, Spring	72
Wheat, Winter	73

**FFA Agronomy –Division 4001 Continued**

Class Name:	Class Number:
<b><u>Potatoes</u></b>	
Red, Market (5)	74
Red, Seed (5)	75
White, Market (5)	76
White, Seed (5)	77
<b><u>Sugar Beets</u></b>	
Single Most Perfect, Topped	78
3 Most Perfect, Topped	79
Single Largest, Topped	80
3 Largest, Topped	81
<b><u>Beans, Field</u></b>	
Great Northern	82
Pinto	83
Any Other Bean	84
<b><u>Hay, 12" slice tied</u></b>	
1st or 2nd Cutting Alfalfa	85
Legume– Grass Hay	86
Mixed Grass Hay	87
Cube Hay, 1/2 Bushel Basket	88
Any Other	89

**FFA Classroom—Division 4002**

Students can show only one notebook and one record book in any one year with current year notes being the last entry. Second, third, and fourth year notebooks shall contain only the materials from that respective year or category, not from the previous years.

The notebooks should be classroom notes from the classes that are related to Production Agriculture/Agribusiness

Class Name:

<b><u>Ag Classroom Notebook</u></b>	Class Number:
Ag Business Notebook Typed	1
Ag 2 Notebook Typed	2
Ag 3 Notebook Typed	3
Ag 4 Notebook Typed	4
Ag Business Notebook Written	5
Ag 1 Notebook Written	6
Ag 2 Notebook Written	7
Ag 3 Notebook Written	8
Ag 4 Notebook Written	9
Ag Business	10

**FFA Classroom—Division 4002 Continued**

Class Name	Class Number:
Any Other (horticulture, Aquaculture, AgScience, etc.)	11
Ag 1 Record Book	12
Ag 2 Record Book	13
Ag 3 Record Book	14
Ag 4 Record Book	15
Chapter Scrap book	16
Chapter Display Board	17
Secretary Book	18
Treasure Book	19
Video Presentation of Single FFA Activity	20
Video Presentation of Single Ag Ed Unit	21
Video Presentation of Complete FFA Program	22
Any Other Video Presentation by Student	23
Web Pages Designed by FFA Members	24
Agricultural Learning Labs (any discipline)	25
Career Development Event, Edu. Material Compiled	26
Classroom Project in Production	27
Classroom Project in Business	28
Classroom Project in Aquaculture	29
Classroom Project in Horticulture	30
Classroom Project in Natural Resources	31
Computerized Projects in Classroom Instruction	32
Any Other Classroom Project	33
Ag 2 Best Notebook, 1+ years work	34
Ag 3 Best Notebook, 2+ years work	35
Ag 4 Best Notebook, 3+ years work	36

**FFA Showmanship—Division 4003**

Showmanship participants must compete with their own animal.

Class Name:	Class Number:
Horse	1
Dairy Goat	2
Market Goat	3
Dairy Cattle	4
Market Swine	5
Market Sheep	6
Market Cattle	7
Rabbit	8
Poultry	9
Breeding Sheep	10

**FFA Vegetables—Division 4004**

Each species is judged separately

Class Name:	Class Number
Beans, Green –10	1
Beans, Yellow –10	2
Beets, Table –5	3
Broccoli –3	4
Brussel Sprouts –2	5
Cabbage –1	6
Carrots, Table –5	7
Cauliflower –1	8
Cucumber, Slicing –3	9
Cucumber, Pickled –5	10
Corn, Green, Sweet –5	11
Eggplant –1	12
Endive –1	13
Kohlrabi –3	14
Lettuce Head –1	15
Lettuce Leaf –1 plant	16
Green Onions –5	17
Dry Round Onions –5	18
Parsley, Bunch 2”-3”	19
Parsnips, Table –3	20
Peas, Green –10	21
Peas, Edible Snap –10	22

Class Name:	Class Number:
Peas, Edible Flat –10	1
Peppers, Hot–3	2
Peppers, Sweet –3	3
Potatoes, Red–5	4
Potatoes, White –5	5
Pumpkin Pie, Small-1	6
Radish–3	7
Rhubarb–3stalks	8
Rutabagas–3	9
Squash, Zucchini –3	10
Squash, Summer & Other –3	11
Squash, Acorn –2	12
Squash, Banana–1	13
Squash, Hubbard –1	14
Squash, Winter & Other –3	15
SwissChard –1	16
Tomatoes, Cherry/Plum/Pear	17
Tomatoes, Ripe –5	18
Turnips, Table –5	19
Watermelon –1	20
Any Other Vegetables	21
Best Garden Exhibit by 1 Individual	22

Based On:

- 3 Points for Blue
- 2 Points for Red
- 2 Points for White



# Department 50 Big Horn County 4-H

**General Dog Show**

1. All Dogs must be at least 6 months of age by May 1st of current year to compete at the State 4-H Dog Show & 1 year of age for agility classes
2. Dogs must have a county health certificate by a veterinarian. No animals will be allowed on the Big Horn County Fairgrounds without a valid health certificate.
3. All dogs must be on a leash (excluding competitions)& under control at all times. Big Horn County Fair rules prohibit any dog from being any place but the campground & official sight of the dog show. Dogs are NOT permitted anywhere near the stock barns. Once the 4-H dog show is complete, all dogs must be removed from the fairgrounds
4. Vicious dogs will be dismissed from the ring & must be removed from the premises.
5. Females in season will be allowed in classes. However, they will go through at the end of all classes. Spayed, monorchidic, & neutered dogs may be shown without judging discrimination.
6. The show committee reserves the right to ask anyone violating these rules to leave.

**Dog Showmanship**

See Division: 5058-5070 Class 4

**4-H Dog Obedience—Division 5000**

1. 4-H member may complete only one obedience class per exhibit with a total maximum of two dog entries. The first dog is referred to as “A” dog. The other is referred to as “B” dog for class entries.
2. The first year beginner novice class is for members who are in the first year of their dog project, not the first year with a new dog. It is designed as a training class for members who do not feel competent to start on leash classes. Members may compete in first year beginner novice class only once.
3. A 4-H exhibitor with a dog shown previously in obedience classes by another 4-H member, or a dog that has a title from another organization or has three qualifying scores from the designated annual county 4-H show, must show the dog by these guidelines: A: Junior & Intermediate age exhibitors may move back or down one level. B: Senior age exhibitors must show the dog at the highest level the dog has achieved.
4. A dog receiving a qualifying score of at least 170 points at the designated annual county fair may advance the following year to the next higher class but must advance the following year to the next higher class but must advance after receiving 3 qualifying scores from designated annual county 4-H show. Once the higher level of obedience is selected for the dog, the member

5. High in trail will be calculated on the basis of the raw qualifying score plus 5 additional points with each increase in level of difficulty.
6. Score Sheets: The Wyoming 4-H dog score sheets were designed for the benefit of 4-H members. They are intended as guides for judges. Judges use their discretion in deciding the seriousness of errors.
7. All dogs must enter/leave the show ring & compete with a leash.
8. Bait and/or toys are not allowed in obedience competition.
9. Dogs soiling or urinating the ring during judging will be disqualified and receive no score.
10. Males & Females will be shown in the same class.

Females in heat will be shown last in the class & must be kept away from the obedience ring until call time.

Class Name	Class Number:
First Year Beginner Novice	1
On Leash A	2
On Leash B	3
Novice A, On & Off Leash	4
For dogs that have not received a C.D.title	
Novice B, On & Off Leash	5
For dogs having AKC qualifying score (170) in AKC Novice	
Graduate Novice A	6
for dogs that received a C.D. title, dogs must have received C.D.X., not title required	
Graduate Novice B	7
For dogs having an AKC qualifying score (170)in AKC graduate	
Open A, Off Leash	8
For dogs,w/outC.D.X., no title required	
Open B, Off Leash	9
For dogs having AKC qualifying score (170)in AKC open	
Utility A. Off Leash	10
For dogs that have received their C.D.X title	
Utility B, Off Leash	11
For dogs having an AKC qualifying score (170) in AKC utility	



### **4-H Dog Conformation—Division 5001**

1. All dogs must enter and leave ring on a leash.
2. Classes will be subdivided by breeds within a class, if numbers warrant. First place winners in classes 1-10 will compete for Best in Show in confirmation.
3. Exhibitors entering more than one dog in any class may be assisted only by another 4-H member (from same county, if possible), if the dogs must be shown at the same time.
4. Classes 1-8 will be judged according to AKC standards, but it is not necessary that dogs be registered; they must be purebred—both animal parents of the same breed.
5. Class 1 and 10 are for crossbred dogs, parents of dominant breed characteristics and/or soundness, gait, condition, and grooming.
6. Before entering your dog, check the list of breeds that are eligible for each group. It can be found online at [http:// Wyoming4-H.org](http://Wyoming4-H.org) under the dog link of the projects tab.

Class Name	Class Number:
Sporting Group	1
Hound Group	2
Working Group	3
Terrier Group	4
Toy Group	5
Non-Sporting Group	6
Herding Group	7
Any Other Purebred Dog	8
Any Other Dog, Over 14"	9
Any Other Dog, Under 14"	10

### **4-H Dog Agility—Division 5002-5005**

1. Dogs must be at least one year of age by May 1st current year.
2. State entrants must achieve qualifying scores at their county level before competing in the State 4-H Dog Show. The level at which a member qualifies at the county level is the level in which they will compete at the State 4-H Dog Show.
3. A dog receiving a qualifying score of at least 75 points at county 4-H show may advance the following year to the next higher class but must advance after receiving 3 qualifying scores from the designated county 4-H show. Once the higher level in agility is selected for the dog, the member may not drop back to a lower level with the same dog.
4. Youth, with a dog shown in previous years by another 4H member or a dog that has a standard agility title from another organization, or has received 3 qualifying scores from the designated annual county 4-H show, must show the dog under these guidelines:
  - A. Junior & intermediate aged 4 H youth may move back/down one level.
  - B. Senior aged 4-H youth must show the dog at the highest level the dog has achieved.

5. All dogs must enter and leave the ring on a leash.
6. Level one dogs will run on a leash level two dogs must run off leash or with a tab no longer than 6". Collars must be flat, buckle riding with nothing hanging off such as tags.
7. Bait is not allowed in agility competitions.
8. Dogs in season will run at the end of each class.
9. A time for all handlers (only) to familiarize themselves with the course they are competing in will be established and announced.
10. Fastest times will be used to break ties on scores at all levels.

### **Division 5002—Under 10"**

### **Division 5003— 10"-15"**

### **Division 5004—15"-20"**

### **Division 5005- Over 20"**

ClassName:	Class Number
Agility Level 1	1
Agility Level 2	2
Agility Level 3	3
Agility Level 4	4
Agility Level 5	5
Agility Level 6	6

### **4-H Dog Rally—Division 5006**

1. Eligible entries are identified & entered by each County 4H Educator.
2. A dog can be entered into only one rally class.
3. Entries must achieve qualifying scores at their county level before competing in the State 4-H Dog Show. The level at which a member qualifies at the county level is the level in which they will compete at the State Show.
4. A dog must advance levels after receiving 3 qualifying scores except for the (RAE). Once a level is selected for the dog, the member may not drop to a lower level to compete with that dog. RAE Class is indefinitely.
5. Dog soiling in the ring will be disqualified.
6. All dogs must enter & leave the show ring on leash. Those competing in On leash classes should do so with a 6' leash.
7. Collar may be flat buckle (leather or nylon) or choke chains.
8. No bait (dog treats or toys) allowed in show ring.
9. Rally Advance Excellent (RAE) Class only—participation ribbons will be given in the Advance & Excellent classes regardless of qualifying score. If qualifying scores are received in both classes, then placement ribbons will be given.
10. Classes are based on age of the youth in the experience of the dog and include:
  - A. NOVICE DOG: A dog competing which has not obtained 3 qualifying scores from competitions nor has a Rally title from another organization.

### **Rally—Division 5006 continued**

B. **PREADVANCED DOG:** A dog which has received 3 qualifying scores as a Novice Dog but has not earned a qualifying score as an Advanced Dog.

C. **ADVANCED DOG:** A dog which has received 3 qualifying scores from competition, received a score of at least 70 points in a Novice Dog class, or that has a Rally title from another organization.

D. **EXCELLENT DOG:** A dog which has received 3 qualifying scores from competition, received a score of at least 70 points in Advanced Dog class, or that has a Rally title from another organization.

E. **RALLY ADVANCED EXCELLENT (REA):** After receiving 3 qualifying scores from competitions, the handler and dog move up to this level. At this level the handler and dog will compete in both Advance Dog and Excellent Dog classes at the same show. The handler and dog must earn a qualifying score of 70 in each of the classes (Advance & Excellent) to earn ribbons and/or prizes. Handler and dog may show at the level indefinitely.

Class Name:	Class Number:
Junior, Novice Dog	1
Junior, Pre-Advanced Dog	2
Intermediate, Novice Dog	3
Intermediate, Pre-Advanced Dog	4
Senior, Novice Dog	5
Senior, Pre-Advanced Dog	6
Jr. Int.—Sr.—Advanced Dog	7
Jr. Int. Sr.—Excellent Dog	8
Jr. Int.-Sr.—RAE Dog	9

### **4-H Aerospace—Division 5007**

1. Posters or display boards should have a method of hanging (holes, drilled, string hangers, etc.)
2. No live rocket engines allowed in any display.

Class Name:	Class Number:
<u>Junior, 8-10 years old</u>	1
First or Second Year in Project	2
Three Years in Project	
<u>Intermediate, 11-13 years old</u>	3
First or Second Year in Project	4
Three Years in Project	
<u>Senior 14-18 years old</u>	
First or Second Year in Project	5
Three Years in Project	6

### **4-H Animal Poster Project—Division 5008-5013**

1. **NO LIVE ANIMALS.** All live animals need to be entered in Junior Show.

2. Posters max size 22”x28”. Put a small hole in top center of poster for hanging. Display boards must not exceed 2”x3”.

Division 5008—Jr. 8-10yrs. old 1st/2nd year in project  
Division 5009—Jr. 8-10yrs. old, 3rd + year in project  
Division 5010—Int. 11-13yrs. old, 1st/2nd year in project  
Division 5011—Int. 11-13yrs. old, 3rd+year in project  
Division 5012—Sr. 14-18 yrs. old, 1st/2nd year in project  
Division 5013—Sr. 14-18 yrs. old, 3+ year in project

Class Name:	Class Number
Beef	1
Cat	2
Dairy Cattle	3
Dairy Goat	4
Dog	5
Horse	6
Meat	7
Goat	8
Poultry	9
Rabbit	10
Sheep	11
Swine	

### **4-H Cake Decorating—Division 5014**

1. Open only to members enrolled in the cake decorating project.
2. Decorating must be done on an artificial cake foam, such as styrofoam or inverted cake pan. No Real Cakes for exhibit.
3. Exhibits should be placed on disposable plates or boards covered with foil, plastic or decorative covering, & allow 1” of space between cake & outer edge of plate or board.
4. Do NOT bring exhibits on glass plates or valued trays.
5. Frosting should make a good base for the decorations.
6. Design should be suitable for the size & shape of the cake. It should good use of color & a pleasing combination of décor.
7. Member must exhibit only in class of unit on which they enrolled. See members manual for details on requirements.
8. All exhibits w/frosting that are not picked up by release day will be disposed of.

Class Name:	Class Number:
<u>Junior, 8-10 years old</u>	
1st/2nd year in Project	1
3 years in Project	2
<u>Intermediate, 11-13 years old</u>	
1st/2nd year in Project	3
3 + years in Project	4
<u>Senior, 14-18 years old</u>	
1st/2nd year in Project	5
3 + years in Project	6

**4-H Child Development—Division 5015**

Only 4-H members enrolled in 4-H child development project during the present year may compete in this class.

Class Name:	Class Number:
<u>Junior, 8-10 years old</u>	
1st/2nd year in Project	1
3rd year in project	2
<u>Intermediate, 11-13 years old</u>	
1st/2nd year in Project	3
3+ years in Project	4
<u>Senior, 14-18 years old</u>	
1st/2nd years in Project	5
3+ years in Project	6

**4-H Citizenship- Division 5016**

1. Pictures, posters or display board not appropriately prepared for hanging will not be displayed.
2. Oversized exhibits will be displayed as space permits.

Class Name:	Class Number:
<u>Junior, 8-10 years old</u>	
1st/2nd year in Project	1
3rd year in Project	2
<u>Intermediate, 11-13 years old</u>	
1st/2nd year in Project	3
3+ years in Project	4
<u>Senior, 14-18 years old</u>	
1st/2nd years in Project	5
3+ years in Project	6

**4-H Club Exhibits—Division 5017**

Class Name:	Class Number:
Any 4-H Club/Group Completed Project	1

**4-H Computers—Division 5018**

Exhibit may be accompanied with an explanation of operation & directions for use or operating.

Class Name:	Class Number:
<u>Junior, 8-10 years old</u>	
1st/2nd year in Project	1
3rd year in Project	2
<u>Intermediate, 11-13 years old</u>	
1st/2nd year in Project	3
3+ years in Project	4
<u>Senior, 14-18 years old</u>	
1st/2nd years in Project	5
3+ years in Project	6

**4-H Electricity—Division 5019**

1. Put a small hole in the upper center of the display board & poster for hanging.
2. Exhibits will be judged on general appearance, electrical Integrity, sage construction & technical accuracy.

Class Name:	Class Number:
<u>Junior, 8-10 years old</u>	
1st/2nd year in Project	1
3rd year in project	2
<u>Intermediate, 11-13 years old</u>	
1st/2ndyear in Project	3
3+years in Project	4
<u>Senior, 14-18 years old</u>	
1st/2nd years in Project	5
3+years in Project	6

**4-H Entomology—Division 5020**

1. Insect collections must display collections (specimen must be visible w/out opening box). Individual specimen labels should include:

- Line 1: State & Location in state where specimen was located (ex. WY:5 mile N Cheyenne)
- Line 2: Collection date & where specimen was found (ex. 23-WI-98, on alfalfa)
- Line 3: Name of collector (COL: B .Smith)

Class Name:	Class Number:
<u>Junior, 8-10 years old</u>	
1st/2nd year in Project	1
3rd year in Project	2
<u>Intermediate, 11-13 years old</u>	
1st/2ndyear in Project	3
3+years in Project	4
<u>Senior, 14-18 years old</u>	
1st/2ndyears in Project	5
3+years in Project	6



#### **4-H Fabric & Textiles—Division 5021-5026**

1. Members should list any other person who was involved in the project & what they contributed.
2. Knitting & Quilting projects must each include historical information about the skills involved.
3. F & F stands for fabric and fashion  
Division 5021—Jr. 8-10 years old, 1st/2nd year in project  
Division 5022—Jr. 8-10 years old, 3rd year in project  
Division 5023—Int. 11-13 years old, 1st/2nd year in project  
Division 5024—Int. 11-13 years old, 3+ years in project  
Division 5025—Sr. 14-18 years old, 1st/2nd year in project  
Division 5026—Sr. 14-18 years old, 3+ years in project

Class Name:	Class Number:
Crocheting	1
F&F Construction	2
F&F Buymanship	3
Knitting	4
Quilting	5

#### **4-H Fashion Revue Contest—Division 5027**

Class Name:	Class Number:
<u>Junior, 8-10 years old</u>	
1st/2nd year in Project	1
3rd year in project	2
<u>Intermediate, 11-13 years old</u>	
1st/2nd year in Project	3
3+ years in Project	4
<u>Senior, 14-18 years old</u>	
1st/2nd years in Project	5
3+ years in Project	6

#### **4-H Food & Nutrition—Division 5028**

1. More than 1 entry may be entered per class, AS LONG AS entries display different techniques. (ex. 4-H members could enter a sponge cake, coffee cake, & angel food cake.)
2. When single items are exhibited (rolls, cookies, biscuits, etc) Enter 5 items for each class.
3. When whole items are exhibited (cake, loaves, etc.) enter ¼ of the item. ALL BREADS; take an end-cut of the loaf, cut top crust to bottom crust. Bread machine mixes are not allowed
4. Exhibit food on 6" or smaller plastic coated or styrofoam plate when possible.
5. Recipes are required on ALL items. Recipes will NOT be returned & become the property of 4-H. Recipes must include the members name, age, & county they are representing.

6. Only enter foods that can be safely stored at room temperature. Food entered must be suitable for freezing prior to state fair. Food determined to be unsafe at room temperature will be disqualified, with the decision of the judge being final. (ex. Do not enter pies casseroles, or item with cream cheese frosting)

Class Name:	Class Number:
<u>Junior, 8-10 years old</u>	
1st/2nd year in Project	1
3rd year in Project	2
<u>Intermediate, 11-13 years old</u>	
1st/2nd year in Project	3
3+ years in Project	4
<u>Senior, 14-18 years old</u>	
1st/2nd years in Project	5
3+ years in Project	6

#### **4-H Food Preservation—Division 5029**

1. Open to members enrolled in Food Preservation or other food project. All exhibits must have the 4-H foods preservation label attached in some fashion.
2. All canned fruits, vegetables, meats & pickle products must be prepared following proper procedures. Specific procedures, altitude, adjustments, & processing times that must be followed can be found in the September 2015 USDA "Complete Guide to Home Canning" (Available, UW Cooperative Extension Service or at <http://www.uwyo.edu/cennutrition/Preser.htm>)
3. For high altitude conversions: [ces.uwyo.edu/altitude\\_adjusters\\_altitudes\\_in](http://ces.uwyo.edu/altitude_adjusters_altitudes_in)
4. For food safety material: [http://uwacadweb.uwyo.edu/cennutritionpublications\\_main](http://uwacadweb.uwyo.edu/cennutritionpublications_main)
5. All canned goods should be exhibited without rings. Leave rings on canned goods until arrival at fair then remove for judging. The preservation label should be securely attached to the jar with the entry form rubber banded to the jar.
6. Canned goods must be exhibited in regulation canning jars (half pint, pint, or quart) All jelly products (jelly, jams, preserves, marmalades, butters) must be processed in a boiling water bath to be judged. Paraffin sealed jars will not be judged. Jelly products can be exhibited 1/2 cup regulation jars.
7. For food safety reasons, meat jerky entries must be prepared using the boiling brine method recommended by the University of Wyoming Cooperative Extension Services, & the recipe must accompany the product. To obtain this recipe contact your extension office or go to the UWCES Food & Nutrition website at [www.uwyo.edu/cennutrition](http://www.uwyo.edu/cennutrition) and click on "UWCES Publications." Ground jerky products will be disqualified because they cannot be processed in boiling brine.

8. More than 1 item can be entered per class as long as entries display different skills learned. For example, dried herbs should be entered as a collection. Like items (ex. Peaches canned in juice & peaches canned in water,) should be a collection or the best jar entered. Entries should display the members best work & skills learned.

Class Name: Class Number:

Junior, 8-10 years old

1st/2nd year in Project 1  
3rd year in Project 2

Intermediate, 11-13 years old

1st/2nd year in Project 3  
3+ years in Project 4

Senior, 14-18 years old

1st/2nd years in Project 5  
3+ years in Project 6

**4-H Gardening—Division 5030**

1. Exhibit plates for vegetables should be paper or styrofoam.
2. Please use zip close bags for easy removal.
3. Superintendent will have the authority to dispose of entries which have begun to spoil before the end of fair. Exhibitors will still receive their ribbons & awards.
4. Some vegetables may be removed after judging for use in the vegetable judging contest. Exhibitors will still receive their ribbons & awards.
5. Drawings, charts & mounted displays should be limited to a maximum size 22"x28". Pictures, posters, or display boards not appropriately prepared for hanging will not be displayed.

Class Name: Class Number:

Junior, 8-10 years old

1st/2nd year in Project 1  
3rd year in Project 2

Intermediate, 11-13 years old

1st/2nd year in Project 3  
3+ years in Project 4

Senior, 14-18 years old

1st/2nd years in Project 5  
3+ years in Project 6

**4-H Geology—Division 5031**

Use display board or box not to exceed 20"x24" suitable for vertical display. Attach specimens with wire to the board or box so there is no possibility of coming loose.

Class Name: Class Number:

Junior, 8-10 years old

1st/2nd year in Project 1  
3rd year in project 2

Intermediate, 11-13 years old

1st/2nd year in Project 3

3+ years in Project 4

Senior, 14-18 years old

1st/2nd years in Project 5

3+ years in Project 6

**4-H GIS/GPS—Division 5032**

Class Name: Class Number:

Junior, 8-10 years old

1st/2nd year in Project 1

3rd year in Project 2

Intermediate, 11-13 years old

1st/2nd year in Project 3

3+ years in Project 4

Senior, 14-18 years old

1st/2nd years in Project 5

3+ years in Project 6

**4-H Health—Division 5033**

Pictures, posters, or display boards not appropriately prepared for hanging will not be displayed. Oversized exhibits will be displayed as space permits.

Class Name: Class Number:

Junior, 8-10 years old

1st/2nd year in Project 1

3rd year in Project 2

Intermediate, 11-13 years old

1st/2nd year in Project 3

3+ years in Project 4

Senior, 14-18 years old

1st/2nd years in Project 5

3+ years in Project 6

**4-H Horticulture—Division 5034**

See open class flowers division for suggested entries.

Class Name: Class Number:

Junior, 8-10 years old

1st/2nd year in Project 1

3rd year in Project 2

Intermediate, 11-13 years old

1st/2nd year in Project 3

3+ years in Project 4

Senior, 14-18 years old

1st/2nd years in Project 5

3+ years in Project 6

#### **4-H Interior Design—Division 5035**

1. Each article should have a securely attached entry tag & skills summary statements. Any additional information (type of material, finishes, etc.) is helpful.

2. Articles for members enrolled in “Room Magic”

Class Name:	Class Number:
<u>Junior, 8-10 years old</u>	
1st/2nd year in Project	1
3rd year in Project	2
<u>Intermediate, 11-13 years old</u>	
1st/2nd year in Project	3
3+ years in Project	4
<u>Senior, 14-18 years old</u>	
1st/2nd years in Project	5
3+ years in Project	6

#### **4-H Judging Projects—Division 5036-5041**

Division 5036—Jr. 8-10 year old, 1st/2nd year in project

Division 5037—Jr. 8-10 year old, 3rd year in project

Division 5038—Int. 11-13 year old, 1st/2nd year in project

Division 5039—Int. 11-13 year old, 3+ years in project

Division 5040—Sr. 14-18 year old, 1st/2nd year in project

Division 5041—Sr. 14-18 year old, 3+ years in project

Class Name:	Class Number
Horse	1
Livestock	2
Meat	3
Vegetables	4
Wool	5

#### **4-H Leather Craft –Division 5042**

1. More than one entry may be made in “any other item” classes. However, exhibits must be of a different nature. Ex. There may be a leather halter, but not two leather neck ties.

2. Do not send buckles w/belts, bulbs w/lamps, wooden legs w/camp stools, or clock movements w/clocks. Fair & 4-H are not responsible for missing or broken items. Dyeing will be considered in the judging of leather articles.

3. If you make an item from a kit, clearly explain the type of kit used on the skills summary sheet.

Class Name:	Class Number:
<u>Junior, 8-10 years old</u>	
1st/2nd year in Project	1
3rd year in Project	2
<u>Intermediate, 11-13 years old</u>	
1st/2nd year in Project	3
3+ years in Project	4
<u>Senior, 14-18 years old</u>	
1st/2nd years in Project	5
3+ years in Project	6

#### **4-H Nature & Ecology—Division 5043**

Posters or display boards exhibits must come with a sufficient hanging device to be displayed.

Class Name: Class Number:

<u>Junior, 8-10 years old</u>	
1st/2nd year in Project	1
3rd year in Project	2
<u>Intermediate, 11-13 years old</u>	
1st/2nd year in Project	3
3+ years in Project	4
<u>Senior, 14-18 years old</u>	
1st/2nd years in Project	5
3+ years in Project	6

#### **4-H Photography—Division 5044**

1. Exhibits shall be mounted securely on a stiff mounting board of any color. Size of board will be appropriate to the photo.

2. Ensure a hanging hole in the mounting board at top center or holes on left & right edges.

3. NO breakable glass allowed. Use Plexiglas or shrink plastic.

Class Name: Class Number:

<u>Junior, 8-10 years old</u>	
1st/2nd year in Project	1
3rd year in Project	2
<u>Intermediate, 11-13 years old</u>	
1st/2nd year in Project	3
3+ years in Project	4
<u>Senior, 14-18 years old</u>	
1st/2nd years in Project	5
3+ years in Project	6

#### **4-H Pocket Pet—Division 5045**

Class Name: Class Number:

<u>Junior, 8-10 years old</u>	
1st/2nd year in Project	1
3rd year in Project	2
<u>Intermediate, 11-13 years old</u>	
1st/2nd year in Project	3
3+ years in Project	4
<u>Senior, 14-18 years old</u>	
1st/2nd years in Project	5
3+ years in Project	6

#### **4-H Range Management—Division 5046**

Class Name:	Class Number:
<u>Junior, 8-10 years old</u>	1
1st/2nd year in Project	2
3rd year in Project	
<u>Intermediate, 11-13 years old</u>	
1st/2nd year in Project	3
3+ years in Project	4
<u>Senior, 14-18 years old</u>	
1st/2nd years in Project	5
3+ years in Project	6

#### **4-H Recreation –Division 5047-5052**

Posters must have a sufficient hanging device.  
Division 5047—Jr. 8-10 year old 1st/2nd year in project  
Division 5048—Jr. 8-10 year old, 3rd year in project  
Division 5049 –Int. 11-13 year old, 1st/2nd year in project  
Division 5050—Int 11-13 year old, 3+years in project  
Division 5051—Sr. 14-18 year old, 1st/2nd year in project  
Division 5052—Sr. 14-18 year old, 3+years in project

Class Name:	Class Number:
Hunting	1
Recreation	2
Wildlife	3

#### **4-H Robotics—Division 5053**

Exhibits may have directions for use or operating.

Class Name:	Class Number:
<u>Junior, 8-10 years old</u>	
1st/2nd year in Project	1
3rd year in Project	2
<u>Intermediate, 11-13 years old</u>	
1st/2nd year in Project	3
3+ years in Project	4
<u>Senior, 14-18 years old</u>	
1st/2nd years in Project	5
3+ years in Project	6



Preston Murdoch - Vice President  
Murdoch Oil, Inc.

P.O. Box 607 - 140 North 6th St  
(307) 765-4671 - Greybull, WY 82426

#### **4-H Rope Craft—Division 5054**

1. Boards for mounting rope craft should not exceed 2'x2' & should be light plywood or Masonite. A hole should be made in the top center of the display board. The hole should be 1/2" down from the top of the board & be at least 1/4" in diameter. Boards without adequate holes may not be displayed.
2. More than one entry may be made in "any other" classes.

Class Name:	Class Number:
<u>Junior, 8-10 years old</u>	
1st/2nd year in Project	1
3rd year in Project	2
<u>Intermediate, 11-13 years old</u>	
1st/2nd year in Project	3
3+ years in Project	4
<u>Senior, 14-18 years old</u>	
1st/2nd years in Project	5
3+ years in Project	6

#### **4-H Self Determined –Division 5055**

1. All self determined projects must have a completed approval form on file with the state 4-H office before fair.
2. Oversized exhibits will be displayed as space permits.
3. An exhibit may be entered in the self determined division only if it can't be entered in other classes in the fair book.
4. No group entries.
5. Each exhibit in the self determined area must be accompanied by an "information sheet" or it will be disqualified. The sheet must indicate: A: Topic Selected B: goals to be achieved C: accomplishments. The exhibit will be judged on: How well goals were met, or an explanation of how goals were met, suitability of methods or procedures, clarity of explanation of exhibit, achievement or accomplishment in project area. Large exhibits such as automobiles will be displayed outside the 4-H exhibit building. These exhibits will be displayed at exhibitors' risk. Pictures, posters, or display boards not appropriately prepared for hanging will not be displayed. **No live exhibits will be accepted.** Any large item which cannot be displayed in the exhibit hall must be checked in with the superintendent.

Class Name:	Class Number:
<u>Junior, 8-10 years old</u>	
1st/2nd year in Project	1
3rd year in Project	2
<u>Intermediate, 11-13 years old</u>	
1st/2nd year in Project	3
3+ years in Project	4
<u>Senior, 14-18 years old</u>	
1st/2nd years in Project	5
3+ years in Project	6

**4-H Shooting Sports—Division 5056-5061**

1. Posters or display board exhibits must come with a sufficient hanging device. Oversized exhibits will be displayed as space permits. Exhibits must be directly related to the sport of shooting. **NO LIVE AMMUNITION PERMITTED!**

- Division 5056—Jr. 8-10 years old, 1st/2nd year in project
- Division 5057—Jr. 8-10 year old, 3rd year in project
- Division 5058—Int. 11-13 year old 1st/2nd year in project
- Division 5059— Int.11-13 year old 3+ years in project
- Division 5060—Sr. 14-18 year old 1st/2nd year in project
- Division 5061 –Sr. 14-18 year old, 3+ years in project

Class Name	Class Number:
Archery	1
Muzzle Loader	2
Pistol	3
Rifle	4
Shotgun	5

**4-H Sports Fishing—Division 5062**

Posters or display board exhibits must come with a sufficient hanging device to be displayed.

Class Name:	Class Number:
<u>Junior, 8-10 years old</u>	
1st/2nd year in Project	1
3rd year in Project	2
<u>Intermediate, 11-13 years old</u>	
1st/2nd year in Project	3
3+ years in Project	4
<u>Senior, 14-18 years old</u>	
1st/2nd years in Project	5
3+ years in Project	6

**4-H Veterinary Science—Division 5063**

- 1. A 4-H member may enter in more than one class.
- 2. No dead or parts of a dead animal are allowed unless properly preserved. The county 4-H office reserves the right to disqualify & dispose of any project considered a health hazard or potential health hazard.

Class Name:	Class Number:
<u>Junior, 8-10 years old</u>	
1st/2nd year in Project	1
3rd year in Project	2
<u>Intermediate, 11-13 years old</u>	
1st/2nd year in Project	3
3+ years in Project	4
<u>Senior, 14-18 years old</u>	
1st/2nd years in Project	5
3+ years in Project	6

**4-H Visual Arts—Division 5064**

- 1. A project done in school should be eligible for display or show through only one organization. The organization should be chosen by the youth member. (school or 4-H)
- 2. Each exhibit & piece of the exhibit must be identified with artists name, age, county, year in project, & media used.
- 3. Oversize exhibits will be displayed as space permits.
- 4. Each exhibit must have an adequate hanger; either string or wire firmly attached. Absolutely no pictures, posters or display boards will be displayed if not properly prepared. The 4-H department is not responsible for breakage due to inadequate hangers. Pictures should be matted or framed. Framing will not be judged except as to its appropriateness on type of picture.
- 5. Please do not send frames with glass.
- 6. Exhibits in this division must have been created in one of the visual arts project areas during the current 4-H year.
- 7. Members may enter multiple entries as desired per class as long as items are significantly different from each other. Like items will be grouped in collections or portfolios & judged as a set. Entries should display the members best work and skills learned.

- 8. An exhibit may be accompanied by a statement indicating:
  - a. What you started with & what technique you used
  - b. What you learned & what you would change
  - c. Idea on purpose of the exhibit & any other special information you think the judge should know.

Class Name:	Class Number:
<u>Junior, 8-10 years old</u>	
1st/2nd year in Project	1
3rd year in Project	2
<u>Intermediate, 11-13 years old</u>	
1st/2nd year in Project	3
3+ years in Project	4
<u>Senior, 14-18 years old</u>	
1st/2nd years in Project	5
3+ years in Project	6

**4-H Web Pages—Division 5065**

Class Name:	Class Number:
<u>Junior, 8-10 years old</u>	
1st/2nd year in Project	1
3rd year in Project	2
<u>Intermediate, 11-13 years old</u>	
1st/2nd year in Project	3
3+ years in Project	4
<u>Senior, 14-18 years old</u>	
1st/2nd years in Project	5
3+ years in Project	6

#### **4-H Self Wood Working –Division 5066**

Class Name:	Class Number:
<u>Junior, 8-10 years old</u>	
1st/2nd year in Project	1
3rd year in Project	2
<u>Intermediate, 11-13 years old</u>	
1st/2nd year in Project	3
3+ years in Project	4
<u>Senior, 14-18 years old</u>	
1st/2nd years in Project	5
3+ years in Project	6

#### **4-H Youth Leadership –Division 5067**

Class Name:	Class Number:
<u>Junior, 8-10 years old</u>	
1st/2nd year in Project	1
3rd year in Project	2
<u>Intermediate, 11-13 years old</u>	
1st/2nd year in Project	3
3+ years in Project	4
<u>Senior, 14-18 years old</u>	
1st/2nd years in Project	5
3+ years in Project	6

#### **4-H Showmanship–Division 5068-5070**

1. Showmanship is open to:  
Juniors 8-10 years old  
Intermediate 11-13 years old  
Senior 14+years

#### ***AGES ARE OF JANUARY 1ST OF CURRENT YEAR***

2. Animals must meet ownership requirements & be carried in current 4-H projects.
3. Showmanship participants must compete with their own animal.

Division 5068— Senior, 14+yearsold

Division 5069—Intermediate, 11-13 years old

Division 5070—Junior, 8-10 years old

Class Name:	Class Number:
Dairy Goat	1
Horse	2
Swine	3
Dog	4
Beef Cattle	5
Dairy Cattle	6
Breeding Sheep	7
Market Lamb	8
Rabbit	9
Market Goat	10
Poultry	11
Cat	12

#### **4-H Cat—Division 5071**

1. Cats must arrive in a cage and are not to be released until presented to the judge at show time. Violators will be disqualified.
2. All cats must be accompanied by a current rabies vaccination certificate, stating that the animal has been vaccinated by a veterinarian in accordance with current recommendations of the Compendium of Animal Rabies Control as prepared by the National Association of State Public Health Veterinarians (NASPHV). It is strongly suggested, but not mandatory, that all entries have the combination vaccinations, plus feline leukemia. Vaccinations should not be received within 3 weeks prior to the show. Any cat that appears to be sick or have parasites will be disqualified at the discretion of the judge.
3. The “household pet” cat is of mixed breed or unknown descent.
4. A purebred cat is one belonging to a recognized breed with characteristics maintained through generations of unmixed descent; may be registered with a recognized registry.
5. Kittens must be at least 4 months old & not older than 8 months of age. Adult cats are older than 8 months. Because of susceptibility to disease, no kitten under 4 months of age will be accepted for competition.
6. No pregnant or nursing cats may be entered.
7. All cats & kittens must have their claws clipped. Declawed cats may enter the show & will not be counted down for declawing.
8. Do not enter your cat if you feel it will not be easily handled by the judge. No vicious cats.
9. Each cat or kitten must be wearing a harness or collar (not safety collar) and a leash. The exhibitor must always wear the leash on their wrist for safety reasons.
10. Exhibitors must bring their own litter box and litter.
11. Exhibitors must bring their own carpet square during judging.
12. All exhibitors should wear long sleeve shirts or blouses with trousers or skirts. No shorts.
13. All Cats must remain in their cage when not being shown.
14. Cats must be in a harness and leash at all times.
15. A limit of two (2) cats per member.

**4-H Cat –Division 5071 Continued**

Class Name:	Class Number:
<u>Kitten: 4-8 months</u>	1
Long Haired Female	2
Long Haired Male	3
Short Haired Female	4
Short Haired Male	
<u>Adult: More than 9 months of age</u>	
Purebred, Long Haired Male	5
Purebred, Long Haired Female Purebred,	6
Short Haired Male	7
Purebred, Short Haired Female	8
Household Pet, Long Haired Male	9
Household Pet, Long Haired Female	10
Household Pet, Short Haired Male	11
Household Pet, Short Haired Female	12
<u>Fun Class: Ribbons only will be awarded</u>	
Oldest Cat	13
Longest Tail	14
Longest Whiskers	15
Shortest Tail	16
Best Groomed Cat	17
Most Colorful Cat	18
Best Trick	19
Costume Class, Cat Decorated Cage	20

**4-H Clover Buds– Division 5072**

**General Rules:**

1. Open to youth ages 5-7 as of January 1st
2. Youth must be enrolled in 4-H Clover Bud Club in order to exhibit.
3. No Grand or Reserve Champions awarded in this division.
4. Clover Buds are required to do interview judging in classes 13-17

Class Name:	Class Number:
Dog Showmanship	1
Dog Agility	2
Dog Rally	3
Cat Showmanship	4
Cat Fun Class: Oldest Cat	5
Cat Fun Class: Longest Tail	6
Cat Fun Class: Longest Whiskers	7
Cat Fun Class: Shortest Tail	8
Cat Fun Class: Best Groomed Cat	9
Cat Fun Class: Most Colorful Cat	10
Cat Fun Class: Best Trick	11
Cat Fun Class: Costume/Decorated Cage	12
Arts & Crafts	13
Photography	14
Quilting	15
Robotics	16
Any Other Static	17





# RUSSELL & RUSSELL

*Certified Public Accountants*

Donald M. Russell  
donrussell@russell.tax  
307-272-8940

Richard D. Russell  
richruss@russell.tax  
307-272-5782

305 South 4th • PO Box 349  
Basin, Wyoming • 307-568-3304



Lovell, Wyoming

*For all your Hauling, Mining,  
Aggregate, and  
Heavy Equipment needs!*



*Family Owned & Operated  
for over 40 Years!*  
*Rick, Lori & Mike Grandalen*  
307-548-6155

We support this great fair in Basin



Located in  
Thermopolis, Basin, Worland, Powell, Cody, & Shoshoni  
We take pride in serving the Big Horn Basin for  
Therapy and Wellness needs.



**WYOMING**  
**FARM BUREAU FEDERATION**

Our Mission: To organize Farmers and Ranchers to Advocate for  
Sound Agriculture policy at all levels of Government interactions:  
Federal, State, Local.

# TRACTOR GUYS

INC.



1-307-347-3191 | [www.tractorguysinc.com](http://www.tractorguysinc.com) | 1043 W River Rd  
Worland WY



## KINGS

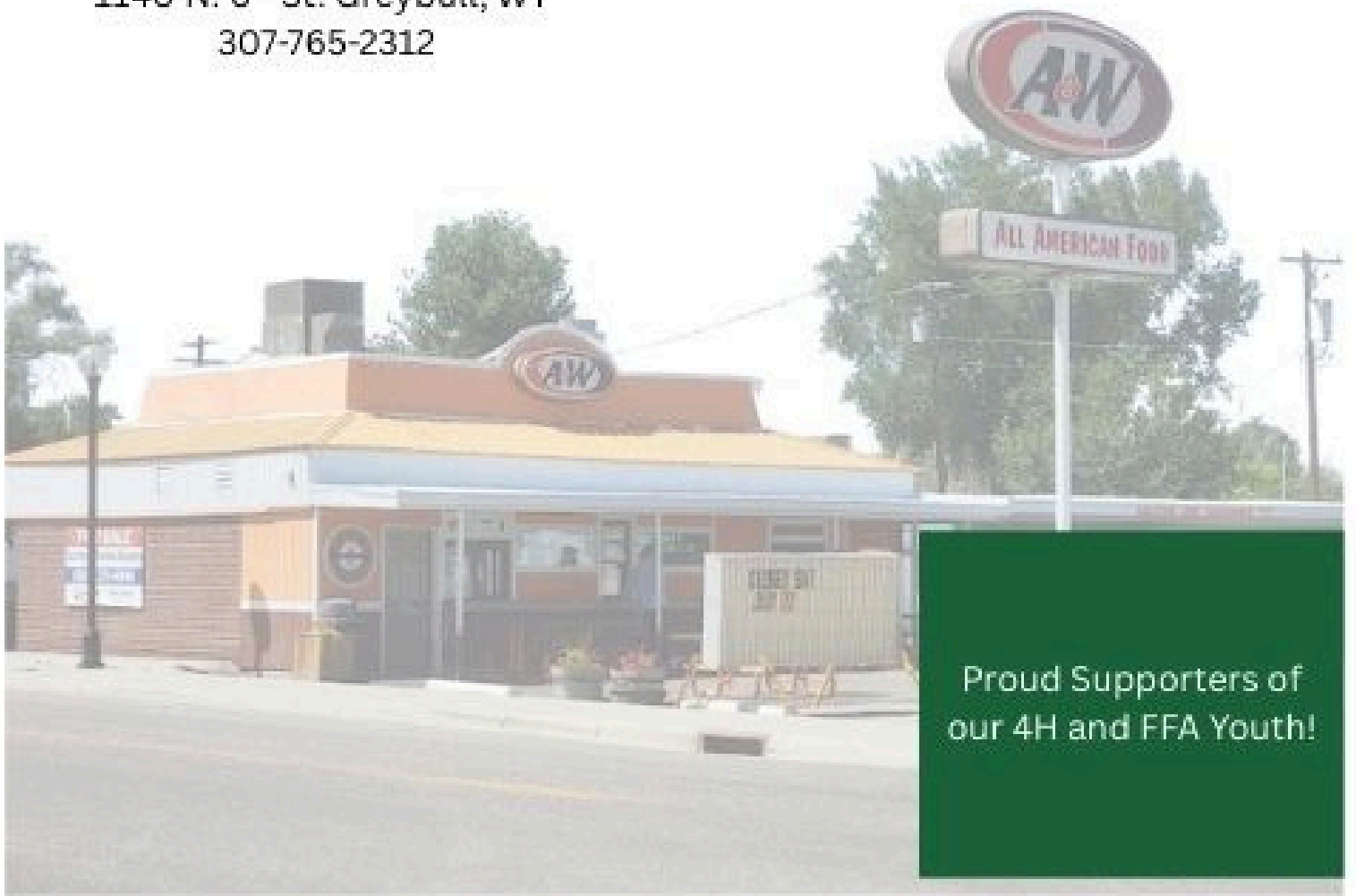
 **CARPET ONE** FLOOR & HOME

We wish you a fun and  
successful fair!

735 Big Horn Ave.  
Worland, WY 82401  
Fax (307) 347-8907

(307) 347-4225  
1-800-974 4225  
[kathy@carpetoneworland.com](mailto:kathy@carpetoneworland.com)

1140 N. 6<sup>th</sup> St. Greybull, WY  
307-765-2312



Proud Supporters of  
our 4H and FFA Youth!

***Kienlen***  
**ACE**®  
***Hardware***  
100 S 20<sup>TH</sup> ST WORLAND, WY

Basin Area  
South Big Horn County

Follow us  
on Facebook!

# CHAMBER OF COMMERCE

TO SERVE AND PROMOTE BASIN AND BIG HORN COUNTY

## Annual Events

Lilac Days Celebration.....	1st weekend in June
Town Wide yard Sale.....	3rd Saturday in June
Jamming in the Park.....	June 18 <sup>th</sup> & 25 <sup>th</sup> -July 16 <sup>th</sup> & 23 <sup>rd</sup> at 7pm
Big Horn County Fair Parade.....	August 1st, 2026
Christmas Bazaar & Little Shoppers.....	2nd Saturday in December

407 C. Street, Basin WY

| 307-568-3055

| BASINCHAMBER@GMAIL.COM

# WHITLOCK MOTORS



**CODY  
REGIONAL  
HEALTH**

**Our care isn't just clinical  
—it's personal.**

visit **[CodyRegionalHealth.org](https://CodyRegionalHealth.org)**